

# K-STECKVERBINDU RED MINI

Reducers, mini

**HANSA FLEX**

## Caracteristici

**Presiune de lucru** Max. 10 bar, vacuum

**Domeniul de utilizare** Air, vacuum

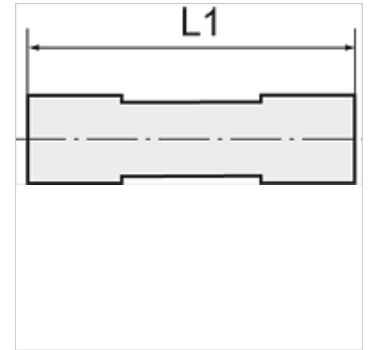
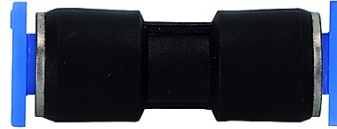
**furtunuri recomandate** PU or PA (nylon)

**Medii** Aer comprimat

**Domeniu de temperaturi** 0 °C to +60 °C

**Material** Plastic, Nickel plated brass

**Inel de presiune** Plastic



## Indicație

Alte date sunt disponibile la cerere.

## Descriere

Push-in fittings series manufactured in plastic and nickel-plated brass, space-saving miniature design.

## Articol

Denumire	pentru Ø exterior furtun	L1 (mm)
K- 07 40 50 15	4 mm / 3 mm	24,9
K- 07 40 50 16	6 mm / 4 mm	26,0