

K-UEM MS NI

Hexagonal swivel nuts - nickel plated brass

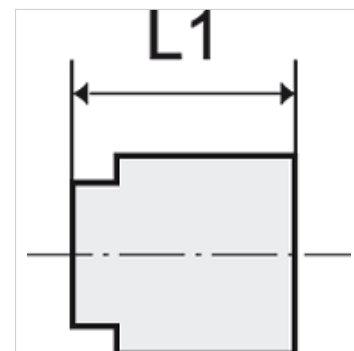
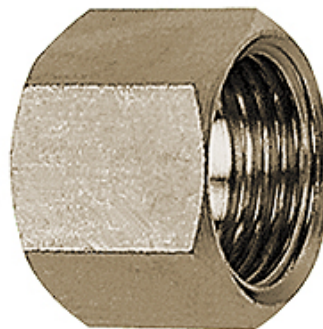
HANSA FLEX

Caracteristici

Temperatura de lucru Max. 150 °C

Presiune Max. 60 bar

Material Alamă nichelată



Indicație

The dimensions of the standard screw fittings may change slightly during the life of the catalogue as a result of optimisation processes. Alte date sunt disponibile la cerere.

Descriere

Suitable for air, water, oil, steam, etc.

Informații suplimentare

Further types and dimensions on request.

Articol

Denumire	Filet	pentru dimensiune manșoane	L1 (mm)	Deschiderea cheii fixe
K- 07 40 44 22	G 1/8	I.D. 4, I.D. 6	13,0	14 mm
K- 07 40 44 23	G 1/4	I.D. 4, I.D. 6	15,0	17 mm
K- 07 40 44 24	G 3/8	I.D. 9	15,0	19 mm
K- 07 40 44 25	G 1/2	I.D. 4, I.D. 6, I.D. 9	16,0	24 mm