

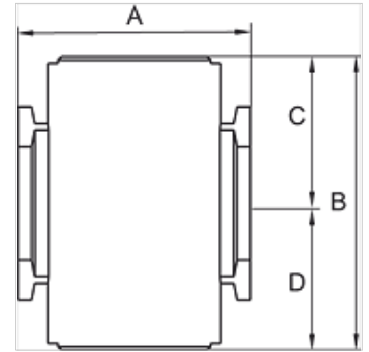
K-VT 2 ABGAENGE G-MINI

Manifolds

HANSA FLEX

Caracteristici

Presiune de intrare	0 - 9 bar
Temperatură mediu	max. 70 °C
Temperatură ambientală	Max. 70 °C
Carcasă	Die-cast aluminium
Alte date	User manual on request



Articol

Denumire	Filet	A (mm)	B	C (mm)	D (mm)	Dimensiunea constructivă
K- 07 25 12 31	G 1/8	28,5	36,0 mm	18,0	18,0	200
K- 07 25 12 32	G 1/4	28,5	36,0 mm	18,0	18,0	200

Accesorii

K-VERBINDUNGELEMENTE	Connecting sets
K-WANDHALTER	Wall bracket