

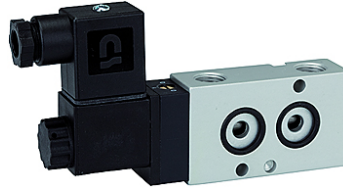
K-WV 3/2 LB NAMUR GETAUSCHT

3/2-way spool valves with NAMUR style interface, NC, ports 1 and 3 or 2 and 3 swapped

HANSA FLEX

Caracteristici

Medii	Air, neutral gases, filtered
Presiune de lucru	1.5 to 10 bar
Temperatura de lucru	-20 °C to +70 °C
Conexiune electrică	Plug connector PG 9
Cuprins în pachetul de livrare	Plug connector PG 9, 1 coding pin, 2 O-rings, 2 fixing screws
Putere absorbită	3 W=/5 VA~
Carcasă	Aluminium, anodised
Vană	Stainless steel
Material de etanșare	NBR



Indicație

Alte date sunt disponibile la cerere.

Descriere

3/2 and 5/2-way spool valves, monostable, with air purging function and pneumatic spring return. With latching manual operator and optional outgoing air restriction.

Two or three-piece service units with excellent flow rates in modern design.
Lockable diaphragm pressure regulator with secondary ventilation, oil can be filled without interrupting operation.

Articol

Denumire	Tensiune	Racord	DN	Debit (L/min)
K- 07 15 00 05	230 V, 50 Hz	G 1/4	7	1250
K- 07 15 00 06	24 V DC	G 1/4	7	1250