

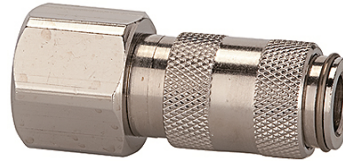
# K-SVKM NW 2,7 IG MS NI

Quick disconnect couplings DN 2.7, nickel-plated brass, female

**HANSA FLEX**

## Caracteristici

|                                  |   |
|----------------------------------|---|
| Presiune de lucru                | 0 - 35 bar, maximum static working pressure (non-pulsating) |
| Debit aer                        | 165 l/min (at 6 bar and $\Delta p = 0.5$ bar)               |
| Temperatură mediu                | -20 °C to +100 °C   |
| Carcasă, manșon, corp al supapei | Nickel-plated brass   |
| Arc, inel elastic, bile          | stain less steel  |
| Material de etanșare             | NBR   |



## Indicație

Alte date sunt disponibile la cerere.

## Descriere

One-hand quick disconnect coupling, one side sealing, extremely compact, with a large bore and a small pressure drop. Ideal for: Medical & Dental equipment, instrumentation and control, laboratory equipment, chemical applications, small tools, analysis, miniature pneumatics, engineering.

## Articol

| Denumire       | Racord       | Lungime (mm) | SW (mm) |
|----------------|--------------|--------------|---------|
| K- 07 35 06 20 | M 5 female   | 25,0         | 9       |
| K- 07 35 06 21 | G 1/8 female | 28,0         | 12      |