

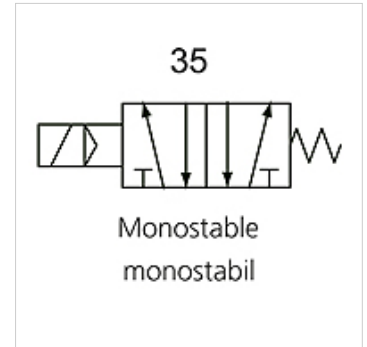
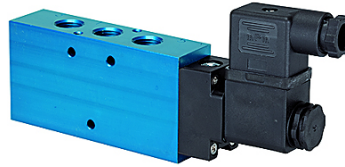
K-WV 5/2 EINS ELEKTRO

5/2-way spool valves, single solenoid

HANSA FLEX

Caracteristici

Funcție	5/2-way
Presiune de lucru	2.5 - 10 bar; Max. vacuum 10 bar (external pilot air)
Presiune de lucru min.	2,5 bar
Domeniu de temperaturi	-10 °C to +60 °C
Debit 6 bari și 10 bari	1500 NI/min (G 1/4), 4600 NI/min (G 1/2)
Conexiune electrică	Coupler plug PG 9 - form B
Tip de protecție	IP 65 (DIN 46244)
Carcasă	Anodised aluminium, blue
Sertar cilindric	Stainless steel
Material de etanșare	NBR



Indicație

Alte date sunt disponibile la cerere.

Descriere

This valve design, featuring the Tapered Tee Seal®, offers the ability to run without lubrication and supports almost any compressed air quality. The valves are largely resistant to dirt and can thus also be used under extreme conditions without any problems. Leakage is now a thing of the past and the spool no longer sticks, even after long idle periods.

Articol

Denumire	Racord	Tensiune	DN	Număr schemă electrică	Comandă
K- 07 15 02 21	G 1/4	24 V DC	8	35	
K- 07 15 02 22	G 1/2"	24 V DC	15	35	
K- 07 15 02 23	G 1/4	230 V AC, 50 Hz	8	35	
K- 07 15 02 24	G 1/2"	230 V AC, 50 Hz	15	35	