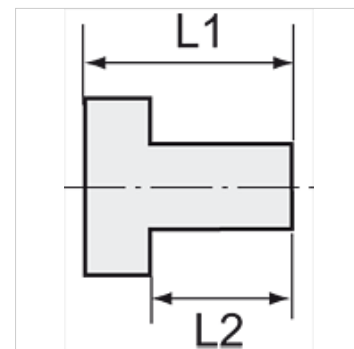
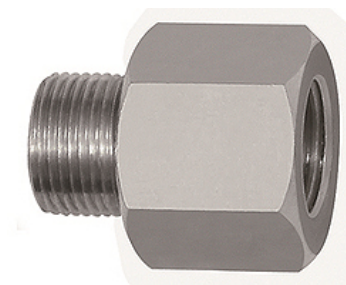


K-GEWINDEADAPTER

Thread adapter for the use of safety nozzles with connection
M12x1,25

HANSA FLEX



Articol

Denumire	Filet exterior	Filet interior	L1 (mm)	L2 (mm)	SW (mm)
K- 07 25 19 75	1/2" - 27 UNS	M 12 x 1.25	25,0	9,0	17