

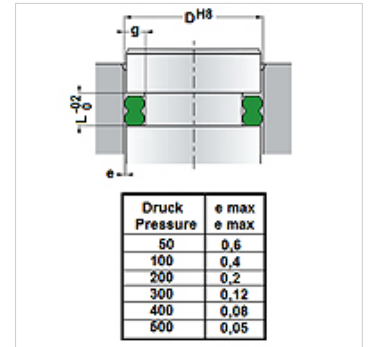
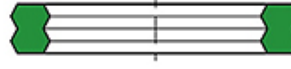
XS AK 534

Inele de etanșare profilate XS AK 534

HANSA FLEX

Caracteristici

Tip constructiv	Inel de etanșare
Presiune de lucru	până la 500 bari
Domeniu de temperaturi	PU18: -30 °C bis +100 °C PU33: -40 °C bis + 120 °C



Descriere

Conform standardului ISO, nuturile pentru inelele O pot fi produse într-un domeniu larg de dimensiuni. La secțiuni transversale de 3,53 mm, adâncimea nutului variază conform ISO de la 2,7 la 3,1 mm. Pentru o etanșare cât mai bună în toate domeniile de dimensiuni, acest inel de etanșare a fost produs astfel încât să poată înlocui inelele O convenționale.

Posibilitate de schimbare cu inele O,

Rezistență mare la extrudare

Nu este necesar inel anti-extruziune.

Articol

Denumire	D (mm)	g (mm)	L (mm)	cross section (mm)	Material
XS 80 - AK 534	80 to 84.9 mm	4.3 to 4.7 mm		5,34	PU33
XS 85 - AK 534	85 to 89.9 mm	4.3 to 4.7 mm		5,34	PU33
XS 90 - AK 534	90 to 94.9 mm	4.3 to 4.7 mm		5,34	PU33
XS 95 - AK 534	95 to 99.9 mm	4.3 to 4.7 mm		5,34	PU18
XS 100 - AK 534	100 to 104.9 mm	4.3 to 4.7 mm		5,34	PU33
XS 105 - AK 534	105 to 109.9 mm	4.3 to 4.7 mm		5,34	PU18
XS 110 - AK 534	110 to 114.9 mm	4.3 to 4.7 mm		5,34	PU33
XS 115 - AK 534	115 to 119.9 mm	4.3 to 4.7 mm		5,34	PU18
XS 120 - AK 534	120 to 124.9 mm	4.3 to 4.7 mm		5,34	PU18
XS 125 - AK 534	125 to 129.9 mm	4.3 to 4.7 mm		5,34	PU18
XS 130 - AK 534	130 to 135.9 mm	4.3 to 4.7 mm		5,34	PU18
XS 136 - AK 534	136 to 142.9 mm	4.3 to 4.7 mm		5,34	PU18
XS 143 - AK 534	143 to 149.9 mm	4.3 to 4.7 mm		5,34	PU18
XS 150 - AK 534	150 to 157.9 mm	4.3 to 4.7 mm		5,34	PU18
XS 158 - AK 534	158 to 165.9 mm	4.3 to 4.7 mm		5,34	PU18
XS 166 - AK 534	166 to 173.9 mm	4.3 to 4.7 mm		5,34	PU18
XS 174 - AK 534	174 to 181.9 mm	4.3 to 4.7 mm		5,34	PU18
XS 182 - AK 534	182 to 189.9 mm	4.3 to 4.7 mm		5,34	PU18
XS 190 - AK 534	190 to 199.9 mm	4.3 to 4.7 mm		5,34	PU18
XS 200 - AK 534	200 to 210 mm	4.3 to 4.7 mm		5,34	PU18