

# K-REED-SCHALTER D

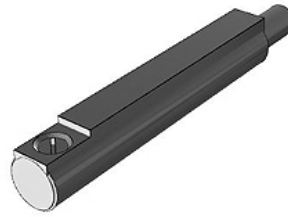
Reed switch D

## Caracteristici

Intrare electrică axial

Lungime cablu 3 m

Serie D



## Descriere

Reed switch, series D-A93, direct mounting in round profile groove, version: electrical input port axial, with LED, with cast-in cable, cable length 3.0 m

## Articol

Denumire	Execuție	Definiție
K- 07 50 00 01	with LED, with grommet, without connector	Reed-switch
K- 07 50 00 02	with LED, with M8 connector (3 pin)	Reed-switch