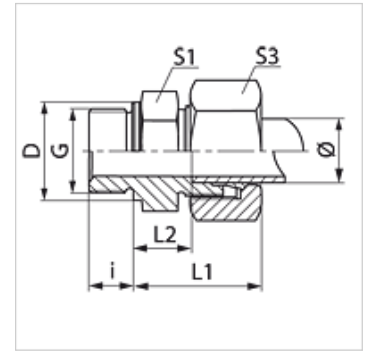


### Свойства

|                    |   |
|--------------------|---|
| Соединение 1       | Наружная резьба BSP, цилиндрическая         |
| Форма уплотнения 1 | Форма В                                     |
| Соединение 2       | Метрическая наружная резьба, цилиндрическая |
| Форма уплотнения 2 | Внутренний конус 24°                        |
| Модель             | Ввертное резьбовое соединение               |
| Конструкция        | прямые                                      |
| Норма              | DIN 2353<br>ISO 8434-1                      |
| Комплект поставки  | Штуцер с накидной гайкой и режущим кольцом  |
| Материал           | Латунь                                      |



### Указание

Указания по монтажу, установке, нагрузке давлением и допустимым рабочим температурам представлены в технической информации для резьбовых трубных соединений.

### Изделие

| Наименование       | Серия | Рабочее давление, бар | Наружный Ø трубы (mm) | G            | D (mm) | i (mm) | L1 (mm) | L2 (mm) | S1 | S3 |
|--------------------|-------|-----------------------|-----------------------|--------------|--------|--------|---------|---------|----|----|
| VR NW 04 HL MG     | L     | PN 200                | 6                     | G 1/8" -28   | 14     | 8      | 23,0    | 8,5     | 14 | 14 |
| VR NW 04 HL 1/4 MG | L     | PN 200                | 6                     | G 1/4" -19   | 18     | 12     | 24,5    | 10,0    | 19 | 14 |
| VR NW 04 HL 3/8 MG | L     | PN 200                | 6                     | G 3/8" -19   | 22     | 12     | 26,0    | 11,5    | 22 | 14 |
| VR NW 04 HL 1/2 MG | L     | PN 200                | 6                     | G 1/2" -14   | 26     | 14     | 26,5    | 12,0    | 27 | 14 |
| VR NW 06 HL 1/8 MG | L     | PN 200                | 8                     | G 1/8" -28   | 14     | 8      | 24,0    | 9,0     | 14 | 17 |
| VR NW 06 HL MG     | L     | PN 200                | 8                     | G 1/4" -19   | 18     | 12     | 25,0    | 10,0    | 19 | 17 |
| VR NW 06 HL 3/8 MG | L     | PN 200                | 8                     | G 3/8" -19   | 22     | 12     | 26,5    | 11,5    | 22 | 17 |
| VR NW 06 HL 1/2 MG | L     | PN 200                | 8                     | G 1/2" -14   | 26     | 14     | 27,0    | 12,0    | 27 | 17 |
| VR NW 08 HL MG     | L     | PN 200                | 10                    | G 1/4" -19   | 18     | 12     | 26,0    | 11,0    | 19 | 19 |
| VR NW 08 HL 3/8 MG | L     | PN 200                | 10                    | G 3/8" -19   | 22     | 12     | 27,5    | 12,5    | 22 | 19 |
| VR NW 08 HL 1/2 MG | L     | PN 200                | 10                    | G 1/2" -14   | 26     | 14     | 28,0    | 13,0    | 27 | 19 |
| VR NW 10 HL 1/4 MG | L     | PN 200                | 12                    | G 1/4" -19   | 18     | 12     | 26,5    | 12,0    | 19 | 22 |
| VR NW 10 HL MG     | L     | PN 200                | 12                    | G 3/8" -19   | 22     | 12     | 27,0    | 12,5    | 22 | 22 |
| VR NW 10 HL 1/2 MG | L     | PN 200                | 12                    | G 1/2" -14   | 26     | 14     | 27,5    | 13,0    | 27 | 22 |
| VR NW 13 HL 3/8 MG | L     | PN 160                | 15                    | G 3/8" -19   | 22     | 12     | 29,0    | 14,0    | 24 | 27 |
| VR NW 13 HL MG     | L     | PN 160                | 15                    | G 1/2" -14   | 26     | 14     | 29,0    | 14,0    | 27 | 27 |
| VR NW 16 HL MG     | L     | PN 160                | 18                    | G 1/2" -14   | 26     | 14     | 31,0    | 14,5    | 27 | 32 |
| VR NW 20 HL 1/2 MG | L     | PN 100                | 22                    | G 1/2" -14   | 26     | 14     | 33,0    | 16,5    | 32 | 36 |
| VR NW 20 HL MG     | L     | PN 100                | 22                    | G 3/4" -14   | 32     | 16     | 33,0    | 16,5    | 32 | 36 |
| VR NW 25 HL MG     | L     | PN 100                | 28                    | G 1" -11     | 39     | 18     | 34,0    | 17,5    | 41 | 41 |
| VR NW 32 HL MG     | L     | PN 100                | 35                    | G 1.1/4" -11 | 49     | 20     | 39,0    | 17,5    | 50 | 50 |
| VR NW 40 HL MG     | L     | PN 100                | 42                    | G 1.1/2" -11 | 55     | 22     | 42,0    | 19,0    | 55 | 60 |
| VR NW 03 HS MG     | S     | PN 250                | 6                     | G 1/4" -19   | 18     | 12     | 28,0    | 13,0    | 19 | 17 |
| VR NW 04 HS MG     | S     | PN 250                | 8                     | G 1/4" -19   | 18     | 12     | 30,0    | 15,0    | 19 | 19 |
| VR NW 04 HS 1/2 MG | S     | PN 250                | 8                     | G 1/2" -14   | 26     | 14     | 34,0    | 17,5    | 27 | 19 |
| VR NW 06 HS 1/4 MG | S     | PN 250                | 10                    | G 1/4" -19   | 18     | 12     | 30,5    | 14,5    | 22 | 22 |
| VR NW 06 HS MG     | S     | PN 250                | 10                    | G 3/8" -19   | 22     | 12     | 31,0    | 15,0    | 22 | 22 |
| VR NW 06 HS 1/2 MG | S     | PN 250                | 10                    | G 1/2" -14   | 26     | 14     | 33,5    | 17,5    | 27 | 22 |
| VR NW 08 HS MG     | S     | PN 250                | 12                    | G 3/8" -19   | 22     | 12     | 33,0    | 17,0    | 22 | 24 |
| VR NW 08 HS 1/2 MG | S     | PN 250                | 12                    | G 1/2" -14   | 26     | 14     | 33,5    | 17,5    | 27 | 24 |
| VR NW 10 HS MG     | S     | PN 250                | 14                    | G 1/2" -14   | 26     | 14     | 37,0    | 19,0    | 27 | 27 |
| VR NW 13 HS MG     | S     | PN 250                | 16                    | G 1/2" -14   | 26     | 14     | 37,0    | 18,5    | 27 | 30 |
| VR NW 16 HS 1/2 MG | S     | PN 250                | 20                    | G 1/2" -14   | 26     | 14     | 44,0    | 22,5    | 32 | 36 |
| VR NW 16 HS MG     | S     | PN 250                | 20                    | G 3/4" -14   | 39     | 18     | 44,0    | 22,5    | 32 | 36 |
| VR NW 20 HS 3/4 MG | S     | PN 160                | 25                    | G 3/4" -14   | 32     | 16     | 47,0    | 23,0    | 41 | 46 |
| VR NW 20 HS MG     | S     | PN 160                | 25                    | G 1" -11     | 39     | 18     | 47,0    | 23,0    | 41 | 46 |
| VR NW 25 HS MG     | S     | PN 100                | 30                    | G 1.1/4" -11 | 49     | 20     | 50,0    | 23,5    | 50 | 50 |
| VR NW 32 HS MG     | S     | PN 100                | 38                    | G 1.1/2" -11 | 55     | 22     | 57,0    | 26,0    | 55 | 60 |

Серия: LL = очень легкая L = легкая S = тяжелая - PN = номинальное давление PB = макс. рабочее давление - Ø = наружный диаметр трубы



# VR MG

Ввертное резьбовое соединение

**HANSA FLEX**

## Варианты изделия

|       |  |
|-------|--|
| VR    | Ввертное резьбовое соединение, Сталь             |
| VR VA | Ввертное резьбовое соединение, нержавеющая сталь |