

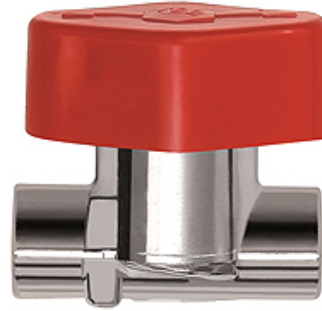
# K-SNV ABSP V MS CR

Quick-stop shut-off valves, chrome-plated brass

**HANSA FLEX**

## Свойства

<b>Применение</b>	Fuel oil, liquefied gas (in gas phase), compressed air
<b>Рабочее давление</b>	max. 16 bar for valves with cutting ring connection; max. 4 bar for valves with pipe thread
<b>Резьба, описание</b>	G thread acc. DIN EN ISO 228-1
<b>Корпус</b>	



## Указание

Прочие данные только по запросу.

## Изделие

Наименование	DN	Соединение
K- 07 30 30 91	7	G 1/4 female thread
K- 07 30 30 92	8	G 3/8 female thread
K- 07 30 30 93	12	G 1/2 female thread
K- 07 30 30 94	4	6 mm pipe
K- 07 30 30 95	6	8 mm pipe
K- 07 30 25 22	7	10 mm pipe
K- 07 30 30 96	10	12 mm pipe
K- 07 30 25 23	12	15 mm pipe