

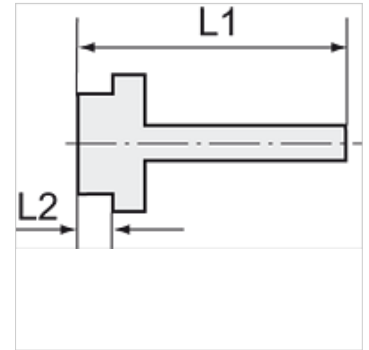
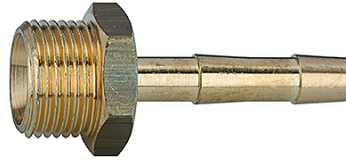
K-TR AG 1

Male hose fittings with parallel male thread

HANSA FLEX

Свойства

Рабочее давление	10 bar
Температура среды	max. +90 °C
Температура окружающей среды	Max. +90 °C
Материал	Brass with a bare metal surface



Указание

The dimensions of the standard screw fittings may change slightly during the life of the catalogue as a result of optimisation processes.

Прочие данные только по запросу.

Дополнительная информация

Further types and dimensions on request.

Изделие

Наименование	Резьба	Для шланга	L1 (mm)	L2 (mm)	SW
K- 07 40 13 84	M 5	LW 4 mm	15,5	5,0	7 mm
K- 07 40 13 86	G 1/8	LW 6 mm	41,5	9,0	14 mm
K- 07 40 49 70	G 1/8	LW 8 mm	36,0	7,0	14 mm
K- 07 40 49 16	G 1/4	LW 8 mm	39,0	9,0	17 mm
K- 07 40 49 20	G 1/4	LW 10 mm	39,0	9,0	17 mm
K- 07 40 13 72	G 3/8	LW 4 mm	48,5	10,0	19 mm
K- 07 40 13 73	G 3/8	LW 6 mm	48,5	10,0	19 mm
K- 07 40 49 26	G 3/8	LW 8 mm	39,0	9,0	19 mm
K- 07 40 14 02	G 3/8 left	LW 6 mm	48,5	10,0	19 mm
K- 07 40 49 29	G 3/8	LW 10 mm	39,0	9,0	19 mm
K- 07 40 14 03	G 3/8 left	LW 9 mm	48,5	10,0	19 mm
K- 07 40 49 36	G 1/2	LW 8 mm	42,0	11,0	24 mm
K- 07 40 49 39	G 1/2	LW 10 mm	42,0	11,0	24 mm
K- 07 40 49 54	G 3/4	LW 25 mm	54,0	12,0	32 mm
K- 07 40 49 56	G 1	LW 19 mm	55,0	13,0	38 mm
K- 07 40 13 83	G 1	LW 32 mm	57,0	12,0	38 mm
K- 07 40 49 61	G 1 1/4	LW 32 mm	61,0	14,0	50 mm
K- 07 40 49 62	G 1 1/4	LW 38 mm	68,5	15,0	42 mm
K- 07 40 49 63	G 1 1/2	LW 32 mm	67,0	15,0	55 mm
K- 07 40 49 64	G 1 1/2	LW 38 mm	71,0	15,0	55 mm
K- 07 40 49 65	G 1 1/2	LW 50 mm	71,0	15,0	55 mm
K- 07 40 49 66	G 2	LW 50 mm	88,0	20,0	70 mm