

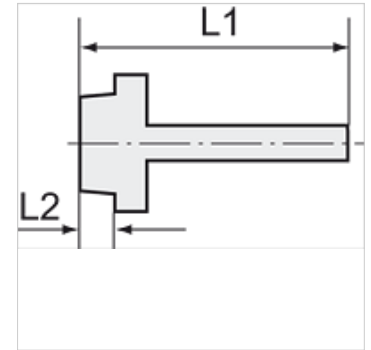
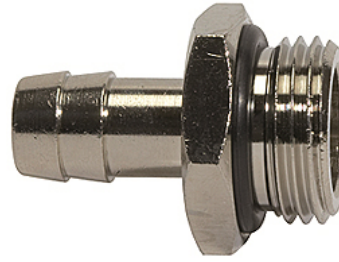
# K-TR AG OR VALUE LINE MS NI

Male hose fittings, incl. NBR-O-ring, parallel male thread

**HANSA FLEX**

## Свойства

Макс. рабочее давление	60 bar
макс. рабочая температура	80 °C
Материал	Никелированная латунь



## Указание

The dimensions of the standard screw fittings may change slightly during the life of the catalogue as a result of optimisation processes.  
Прочие данные только по запросу.

## Описание

For air, water, steam, oil, etc.

## Изделие

Наименование	Резьба	Для шланга	L1 (mm)	L2 (mm)	SW
K- 07 40 14 19	G 1/8	LW 6 mm	30,0	6,5	14 mm
K- 07 40 14 20	G 1/8	LW 8 mm	30,0	6,5	14 mm
K- 07 40 14 21	G 1/8	LW 9 mm	30,0	6,5	14 mm
K- 07 40 14 22	G 1/4	LW 6 mm	32,0	8,0	17 mm
K- 07 40 14 23	G 1/4	LW 9 mm	32,0	8,0	17 mm
K- 07 40 14 24	G 1/4	LW 12 mm	33,0	8,0	17 mm
K- 07 40 14 25	G 3/8	LW 9 mm	33,0	9,0	20 mm
K- 07 40 14 26	G 3/8	LW 12 mm	34,0	9,0	20 mm
K- 07 40 14 27	G 1/2	LW 12 mm	35,5	10,0	25 mm