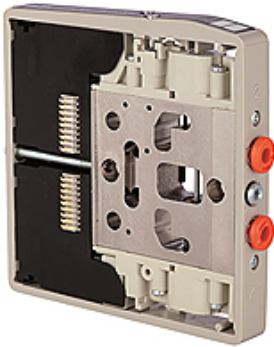


K-VENTILSCHEIBE HDM 4

Valve discs for HDM valve terminal with 4 mm port



Свойства	
Рабочие среды	Filtered, unlubricated or lubricated compressed air. If lubrication is used, it must be continuous.
Рабочее давление	Max. vacuum 10 bar (external pilots), 3 to 7 bar (internal pilots as standard)
Управляющее давление	3 - 7 bar
Область температур	-10 °C to +60 °C
Расход	200 NI/min (Ø 4), 500 NI/min (Ø 6), 800 NI/min (Ø 8)
Количество сигналов управления	Max. 16 (e.g. 16 spring return valves)
Ручное вспомогательное управление	Latching (bistable), Monostable (non-latching) version also available on request
Потребляемая мощность	0.6 W per pilot
Степень защиты	IP 65



Указание
Прочие данные только по запросу.

Описание
These compact valve terminals, with a maximum flow rate of 800 NI/min, can be individually adapted to the specific conditions of each application thanks to the wide range of functions and various input and intermediate plates. Since each valve terminal is a customer-specific combination of a series of individual elements, the catalogue only lists the available input, intermediate and end plates as well as the different valve discs and the 25-pin multi-pole connectors.

Дополнительная информация
Important: The scope of supply does not include a connector. Please order separately.

Изделие	
Наименование	Функция
K- 07 15 20 53	2 x 3/2-way, NC, monostable or 5/3-way, mid-position exhausted
K- 07 15 20 58	2 x 3/2-way, NO, monostable or 5/3-way, mid-position pressurised
K- 07 15 20 55	3/2-way, NC, monostable and 3/2-way, NO, monostable
K- 07 15 20 57	5/2-way, monostable
K- 07 15 20 52	5/2-way, monostable (uses only one pin, two signals assigned)
K- 07 15 20 54	5/2-way, bistable (pulse valve)
K- 07 15 20 56	5/3-way, mid-position closed