

# K-VLST K AG-K IG MS NI

Extensions, short, conical male thread, parallel female thread - nickel-plated brass

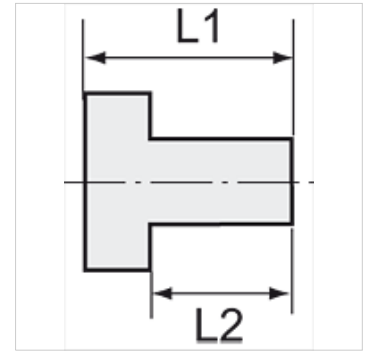
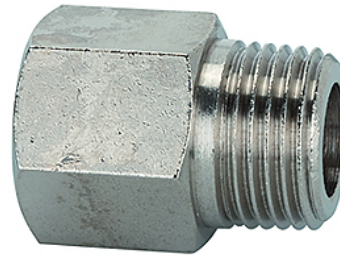
**HANSA FLEX**

## Свойства

Рабочая температура Max. 150 °C

Давление Max. 60 bar

Материал Никелированная латунь



## Указание

The dimensions of the standard screw fittings may change slightly during the life of the catalogue as a result of optimisation processes.

Прочие данные только по запросу.

## Описание

Suitable for air, water, oil, steam, etc.

## Дополнительная информация

Further types and dimensions on request.

## Изделие

Наименование	Резьба наружная	Резьба внутренняя	L1 (mm)	L2 (mm)	SW
K- 07 40 38 91	R 1/8	G 1/8	20,0	8,0	14 mm
K- 07 40 38 92	R 1/8	G 1/4	22,5	8,0	17 mm
K- 07 40 38 98	R 1/8	G 3/8	22,5	8,0	22 mm
K- 07 40 38 93	R 1/4	G 1/4	25,0	11,0	17 mm
K- 07 40 38 94	R 1/4	G 3/8	28,5	11,0	22 mm
K- 07 40 38 95	R 1/4	G 1/2	29,0	11,0	24 mm
K- 07 40 38 96	R 3/8	G 3/8	28,5	11,5	22 mm
K- 07 40 38 97	R 3/8	G 1/2	32,0	11,5	24 mm
K- 07 40 38 99	R 1/2	G 1/2	34,0	14,0	24 mm
K- 07 40 39 00	R 1/2	G 3/4	35,0	14,0	32 mm