

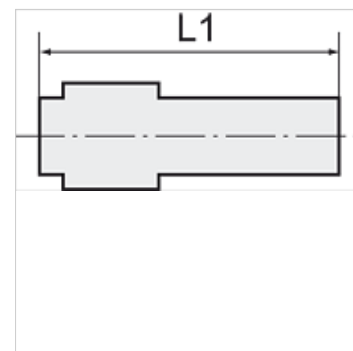
# K-RD STUECKE PP

Reducers

**HANSA FLEX**

## Свойства

Рабочее давление	on request
Рабочая температура	Max. +20 °C
Материал	Polypropylene (PP)
Набивочный материал	Нитрильный каучук



## Указание

Прочие данные только по запросу.

## Описание

Lightweight, push-in fittings distinguished by high strength, toughness, resistance to abrasion and impact resistance - ideal for a wide range of applications. Plastic and metal tubes are connected together quickly and easily. Suitable for compressed air or liquids, with good resistance to a large number of chemicals.

## Изделие

Наименование	для наружного Ø шланга	L1 (mm)	Штуцеры (mm)
K- 07 40 29 00	22 mm	127,0	32
K- 07 40 29 01	28 mm	133,3	32