

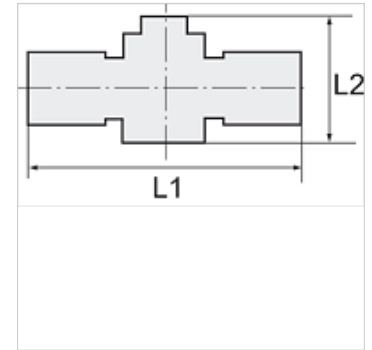
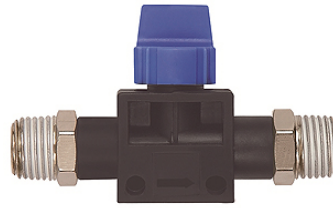
# K-WV 3/2 KONISCH

3/2-way pilot valves with conical male thread, coated

**HANSA FLEX**

## Свойства

Рабочее давление	Max. 15 bar, coarse vacuum
Область применения	Air, vacuum
рекомендуемые шланги	PU or PA (nylon)
Рабочие среды	Compressed air and all gases or liquids that are compatible with the materials
Область температур	-20 °C to +80 °C
Уплотнительная поверхность	Parallel version: O-ring in housing, Conical version: thread coating
Материал	Plastic, Nickel plated brass
Прижимное кольцо	Plastic



## Указание

Прочие данные только по запросу.

## Описание

Push-in fittings series manufactured in plastic and nickel-plated brass. All parts are suitable for use with hoses, tubes or pipes made of plastic and copper.

## Изделие

Наименование	Резьба 1	Резьба 2	L1 (mm)	L2 (mm)
K- 07 40 46 31	R 1/8	R 1/8	65,0	41,5
K- 07 40 46 30	R 1/4	R 1/4	70,0	41,5
K- 07 40 46 32	R 3/8	R 3/8	83,5	46,0