

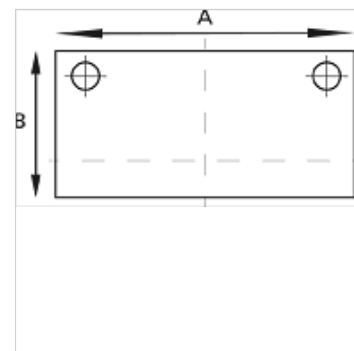
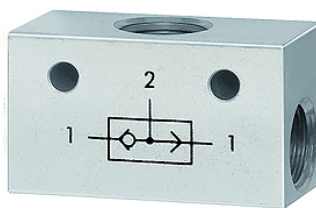
# K-ODER-VENTIL

OR valves

**HANSA FLEX**

## Свойства

Рабочее давление	2 - 10 bar
Область температур	-10 °C to +80 °C
Расход при 6,3 бар и Δ 1 бар	500 NI/min (G 1/8), 1300 NI/min (G 1/4)
Корпус клапана	Алюминий
Шар	Stainless steel
Уплотнения	NBR



## Указание

Прочие данные только по запросу.

## Описание

The valve has two inlets and one outlet. A signal appears at the outlet when the left or right inlet is pressurised. <br>If the pressure at the two inlets is different, the stronger of the two signals appears at the outlet.

## Изделие

Наименование	Резьба	A (mm)	B (mm)
K- 07 15 26 05	3 x G 1/8	36,0	20,0
K- 07 15 26 04	3 x G 1/4	43,0	25,0