

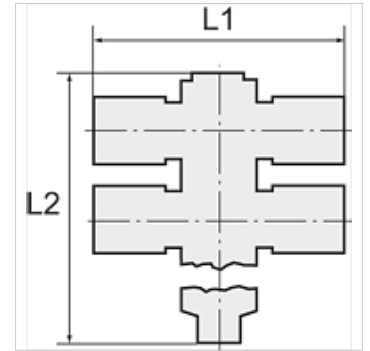
K-T-MEHRF-VERT 6 DREH 1

Tee distributors with inner hex, 6 outlets, swivel type, parallel male thread with O-ring

HANSA FLEX

Свойства

| | |
|----------------------------|--|
| Рабочее давление | Max. 15 bar, coarse vacuum |
| Область применения | Air, vacuum |
| рекомендуемые шланги | PU or PA (nylon) |
| Рабочие среды | Compressed air and all gases or liquids that are compatible with the materials |
| Область температур | -20 °C to +80 °C |
| Уплотнительная поверхность | Parallel version: O-ring in housing |
| Материал | Plastic, Nickel plated brass |
| Прижимное кольцо | Plastic |



Указание

Прочие данные только по запросу.

Описание

Push-in fittings series manufactured in plastic and nickel-plated brass. All parts are suitable for use with hoses, tubes or pipes made of plastic and copper.

Изделие

| Наименование | Резьба | для наружного Ø шланга | Внутренний шестигранник (mm) | L1 (mm) | L2 (mm) | SW |
|----------------|--------|------------------------|------------------------------|---------|---------|-------|
| K- 07 40 06 70 | G 1/8 | 4 mm | 4,0 | 45,0 | 59,1 | 14 mm |
| K- 07 40 06 71 | G 1/8 | 6 mm | 4,0 | 42,6 | 59,1 | 14 mm |
| K- 07 40 06 72 | G 1/8 | 8 mm | 4,0 | 48,5 | 59,1 | 14 mm |
| K- 07 40 06 68 | G 1/4 | 6 mm | 6,0 | 46,7 | 80,5 | 17 mm |
| K- 07 40 06 69 | G 1/4 | 8 mm | 6,0 | 52,5 | 80,5 | 17 mm |
| K- 07 40 06 66 | G 1/4 | 10 mm | 6,0 | 59,6 | 80,5 | 17 mm |
| K- 07 40 06 67 | G 1/4 | 12 mm | 6,0 | 61,2 | 80,5 | 17 mm |
| K- 07 40 06 75 | G 3/8 | 8 mm | 8,0 | 56,7 | 82,2 | 20 mm |
| K- 07 40 06 73 | G 3/8 | 10 mm | 8,0 | 63,5 | 82,2 | 20 mm |
| K- 07 40 06 74 | G 3/8 | 12 mm | 8,0 | 64,9 | 82,2 | 20 mm |