

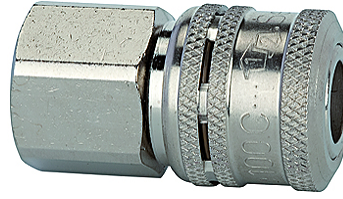
K-LKM S NW7,2 IG

Safety couplings DN 7.2, female

HANSA FLEX

Свойства

Рабочее давление	0 - 35 bar, maximum static working pressure (non-pulsating)
Расход воздуха	1.100 l/min (at $\Delta p = 0.5$ bar)
Температура среды	-30 °C to +100 °C
Корпус, втулка, корпус клапана	Nickel-plated brass
Пружина, шары	Stainless-steel
Набивочный материал	Нитрильный каучук



Указание

Прочие данные только по запросу.

Описание

One-hand safety coupling with double locking mechanism. Connection: Similar to standard couplings, simply by pressing the plug into the coupling. Disconnection: The first locking mechanism is accessible when the sleeve is pushed back. The coupling valve closes. Air can then be relieved from the plug side (hose). The second locking mechanism is released by actuating the unlocking sleeve again. The coupling can now be disconnected.

Изделие

Наименование	Соединение	Длина (mm)	SW (mm)
K- 07 35 02 95	G 1/4 female	46,0	22
K- 07 35 02 96	G 3/8 female	46,0	22
K- 07 35 02 97	G 1/2 female	49,0	24

Дополнительные элементы

K-NIPPEL KUPPL NW7 AG VZ	Plugs for couplings DN 7.2 - DN 7.8, hardened, galvanised steel, male
K-NIPPEL KUPPL NW7 IG VZ 1	Plugs for couplings DN 7.2 - DN 7.8, hardened and galvanised steel, female
K-TUE 7,2 7,8 ST VZ 1	Stems for couplings DN 7.2 - DN 7.8, hardened, galvanised steel,