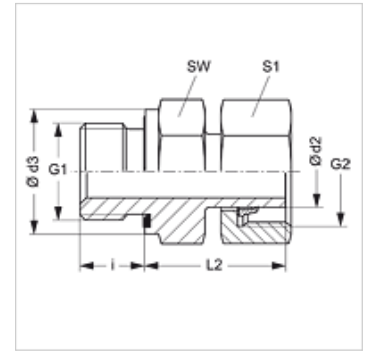


Vlastnosti

| | |
|-------------------|--|
| Prípojka 1 | Vonkajší závit BSP, valcový |
| Tvar tesnenia 1 | Tvar E |
| Prípojka 2 | metrický závit pre matice |
| Tvar tesnenia 2 | Nátrubok so zárezným krúžkom |
| Konštrukcia | Nákrutka pre naskrutkovanie |
| Vyhotovenie | priame |
| Norma | DIN 2353 ISO 8434-1 |
| Rozsah dodávky | Nátrubky s presuvnou maticou a predmontovaným zárezným krúžkom |
| Materiál | Oceľ |
| Povrchová ochrana | galvanický povlak |



Poznámka

Pokyny pre montáž, zabudovanie, tlakové zaťaženie a povolené prevádzkové teploty nájdete v technických informáciách pre fittingové nákrutky

Výrobok

| Označenie | Konštrukčný rad | Prevádzkový tlak | Ø d2 (mm) | G1 | G2 | Ø d3 (mm) | i (mm) | L2 (mm) | SW (mm) | S1 |
|--------------------|-----------------|------------------|-----------|--------------|------------|-----------|--------|---------|---------|----|
| AVR NW 04 L ED | D | PN 315 | 6 | G 1/8" -28 | M 12 x 1,5 | 13,9 | 8 | 24,5 | 14 | 14 |
| AVR NW 06 L ED | D | PN 315 | 8 | G 1/4" -19 | M 14 x 1,5 | 18,9 | 12 | 27,0 | 19 | 17 |
| AVR NW 08 L ED | D | PN 315 | 10 | G 1/4" -19 | M 16 x 1,5 | 18,9 | 12 | 27,5 | 19 | 19 |
| AVR NW 10 L 1/4 ED | D | PN 315 | 12 | G 1/4" -19 | M 18 x 1,5 | 18,9 | 12 | 28,5 | 19 | 22 |
| AVR NW 10 L ED | D | PN 315 | 12 | G 3/8" -19 | M 18 x 1,5 | 21,9 | 12 | 30,0 | 22 | 22 |
| AVR NW 10 L 1/2 ED | D | PN 315 | 12 | G 1/2" -14 | M 18 x 1,5 | 26,9 | 14 | 30,5 | 27 | 22 |
| AVR NW 13 L 3/8 ED | D | PN 315 | 15 | G 3/8" -19 | M 22 x 1,5 | 21,9 | 12 | 30,0 | 22 | 27 |
| AVR NW 13 L ED | D | PN 315 | 15 | G 1/2" -14 | M 22 x 1,5 | 26,9 | 14 | 30,5 | 27 | 27 |
| AVR NW 16 L ED | D | PN 315 | 18 | G 1/2" -14 | M 26 x 1,5 | 26,9 | 14 | 31,5 | 27 | 32 |
| AVR NW 20 L ED | D | PN 160 | 22 | G 3/4" -14 | M 30 x 2 | 31,9 | 16 | 32,5 | 32 | 36 |
| AVR NW 25 L ED | D | PN 160 | 28 | G 1" -11 | M 36 x 2 | 39,9 | 18 | 35,0 | 41 | 41 |
| AVR NW 32 L ED | D | PN 160 | 35 | G 1,1/4" -11 | M 45 x 2 | 49,9 | 20 | 42,5 | 50 | 50 |
| AVR NW 40 L ED | D | PN 160 | 42 | G 1,1/2" -11 | M 52 x 2 | 54,9 | 22 | 47,0 | 55 | 60 |
| AVR NW 03 S ED | S | PN 630 | 6 | G 1/4" -19 | M 14 x 1,5 | 18,9 | 12 | 27,0 | 19 | 17 |
| AVR NW 04 S ED | S | PN 630 | 8 | G 1/4" -19 | M 16 x 1,5 | 18,9 | 12 | 27,0 | 19 | 19 |
| AVR NW 06 S ED | S | PN 630 | 10 | G 3/8" -19 | M 18 x 1,5 | 21,9 | 12 | 32,0 | 22 | 22 |
| AVR NW 08 S ED | S | PN 630 | 12 | G 3/8" -19 | M 20 x 1,5 | 21,9 | 12 | 32,0 | 22 | 24 |
| AVR NW 08 S 1/2 ED | S | PN 630 | 12 | G 1/2" -14 | M 20 x 1,5 | 26,9 | 14 | 35,0 | 27 | 24 |
| AVR NW 10 S ED | S | PN 630 | 14 | G 1/2" -14 | M 22 x 1,5 | 26,9 | 14 | 36,5 | 27 | 27 |
| AVR NW 13 S ED | S | PN 400 | 16 | G 1/2" -14 | M 24 x 1,5 | 26,9 | 14 | 37,0 | 27 | 30 |
| AVR NW 16 S ED | S | PN 400 | 20 | G 3/4" -14 | M 30 x 2 | 31,9 | 16 | 43,0 | 32 | 36 |
| AVR NW 20 S ED | S | PN 400 | 25 | G 1" -11 | M 36 x 2 | 39,9 | 18 | 48,0 | 41 | 46 |
| AVR NW 25 S ED | S | PN 400 | 30 | G 1,1/4" -11 | M 42 x 2 | 49,9 | 20 | 51,0 | 50 | 50 |
| AVR NW 32 S ED | S | PN 315 | 38 | G 1,1/2" -11 | M 52 x 2 | 54,9 | 22 | 60,0 | 55 | 60 |

Konštrukčný rad: LL = Veľmi ľahká L = Ľahká S = Ťažká - PN = Menovitý tlak PB = Max. prevádzkový tlak - Ø d2 = Vonkajší priemer rúry

Varianty produktu

| | |
|-----------|--|
| AVR ED MG | Nákrutka pre naskrutkovanie, Mosadz |
| AVR ED VA | Nákrutka pre naskrutkovanie, Ušľachtilá oceľ |

Náhradné diely

| | |
|----|--------------------------------|
| WD | Mäkké tesnenie pre nákrutky ED |
|----|--------------------------------|