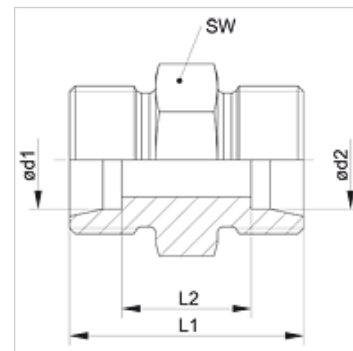


Vlastnosti

| | |
|--------------------------|---|
| Prípojka 1 | metrický vonkajší závit valcový |
| Tvar tesnenia 1 | Vnútorý kužeľ 24° |
| Prípojka 2 | metrický vonkajší závit valcový |
| Tvar tesnenia 2 | Vnútorý kužeľ 24° |
| Konštrukcia | Nákrutka |
| Vyhotovenie | priame |
| Norma | ISO 8434-1 |
| Rozsah dodávky | Hrdlo (bez presuvnej matice a zárezného krúžku) |
| Materiál | Oceľ |
| Povrchová ochrana | galvanický povlak |



Poznámka

Pokyny pre montáž, zabudovanie, tlakové zaťaženie a povolené prevádzkové teploty nájdete v technických informáciách pre fittingové nákrutky

Výrobok

| Označenie | Konštrukčný rad | Prevádzkový tlak | Ø d1 (mm) | Ø d2 (mm) | L1 (mm) | L2 (mm) | SW (mm) |
|-------------------|-----------------|------------------|-----------|-----------|---------|---------|---------|
| XV 04 LL | LL | PN 100 | 4 | 4 | 20 | 12,0 | 9 |
| XV 05 LL | LL | PN 100 | 5 | 5 | 20 | 9,0 | 11 |
| XV 06 LL 04 | LL | PN 100 | 6 | 4 | 20 | 10,5 | 11 |
| XV 06 LL | LL | PN 100 | 6 | 6 | 20 | 9,0 | 11 |
| XV 08 LL 04 | LL | PN 100 | 8 | 4 | 22 | 12,5 | 12 |
| XV 08 LL 06 | LL | PN 100 | 8 | 6 | 22 | 11,0 | 12 |
| XV 08 LL | LL | PN 100 | 8 | 8 | 23 | 12,0 | 12 |
| XV 10 LL | LL | PN 100 | 10 | 10 | 23 | 12,0 | 14 |
| XV 12 LL | LL | PN 100 | 12 | 12 | 23 | 11,0 | 17 |
| XV NW 04 HL | D | PN 315 | 6 | 6 | 24 | 10,0 | 12 |
| XV NW 06 HL 04 | D | PN 315 | 8 | 6 | 25 | 11,0 | 14 |
| XV NW 06 HL | D | PN 315 | 8 | 8 | 25 | 11,0 | 14 |
| XV NW 08 HL 04 | D | PN 315 | 10 | 6 | 26 | 12,0 | 17 |
| XV NW 08 HL 06 | D | PN 315 | 10 | 8 | 26 | 12,0 | 17 |
| XV NW 08 HL | D | PN 315 | 10 | 10 | 27 | 13,0 | 17 |
| XV NW 10 HL 04 | D | PN 315 | 12 | 6 | 27 | 13,0 | 19 |
| XV NW 10 HL 06 | D | PN 315 | 12 | 8 | 27 | 13,0 | 19 |
| XV NW 10 HL 08 | D | PN 315 | 12 | 10 | 28 | 14,0 | 19 |
| XV NW 10 HL | D | PN 315 | 12 | 12 | 28 | 14,0 | 19 |
| XV NW 13 HL 04 | D | PN 315 | 15 | 6 | 28 | 14,0 | 24 |
| XV NW 13 HL 06 | D | PN 315 | 15 | 8 | 28 | 14,0 | 24 |
| XV NW 13 HL 08 | D | PN 315 | 15 | 10 | 29 | 15,0 | 24 |
| XV NW 13 HL 10 | D | PN 315 | 15 | 12 | 29 | 15,0 | 24 |
| XV NW 13 HL | D | PN 315 | 15 | 15 | 30 | 16,0 | 24 |
| XV NW 16 HL 04 | D | PN 315 | 18 | 6 | 29 | 14,5 | 27 |
| XV NW 16 HL 06 | D | PN 315 | 18 | 8 | 29 | 14,5 | 27 |
| XV NW 16 HL 08 | D | PN 315 | 18 | 10 | 30 | 15,5 | 27 |
| XV NW 16 HL 10 | D | PN 315 | 18 | 12 | 30 | 15,5 | 27 |
| XV NW 16 HL 10 27 | D | PN 315 | 18 | 12 | 32 | 17,5 | 27 |
| XV NW 16 HL 13 | D | PN 315 | 18 | 15 | 31 | 16,5 | 27 |
| XV NW 16 HL | D | PN 315 | 18 | 18 | 31 | 16,0 | 27 |
| XV NW 16 HL 27 | D | PN 315 | 18 | 18 | 35 | 20,0 | 27 |
| XV NW 20 HL 06 | D | PN 160 | 22 | 8 | 31 | 16,5 | 32 |
| XV NW 20 HL 08 | D | PN 160 | 22 | 10 | 32 | 17,5 | 32 |
| XV NW 20 HL 10 | D | PN 160 | 22 | 12 | 32 | 17,5 | 32 |
| XV NW 20 HL 13 | D | PN 160 | 22 | 15 | 33 | 18,5 | 32 |
| XV NW 20 HL 16 | D | PN 160 | 22 | 18 | 33 | 18,0 | 32 |
| XV NW 20 HL 16 27 | D | PN 160 | 22 | 18 | 35 | 20,0 | 32 |
| XV NW 20 HL | D | PN 160 | 22 | 22 | 35 | 20,0 | 32 |
| XV NW 25 HL 06 | D | PN 160 | 28 | 8 | 33 | 18,5 | 41 |
| XV NW 25 HL 08 | D | PN 160 | 28 | 10 | 34 | 19,5 | 41 |
| XV NW 25 HL 10 | D | PN 160 | 28 | 12 | 34 | 19,5 | 41 |



Výrobok

| Označenie | Konštrukčný rad | Prevádzkový tlak | Ø d1 (mm) | Ø d2 (mm) | L1 (mm) | L2 (mm) | SW (mm) |
|-------------------|-----------------|------------------|-----------|-----------|---------|---------|---------|
| XV NW 25 HL 13 | D | PN 160 | 28 | 15 | 35 | 20,5 | 41 |
| XV NW 25 HL 16 | D | PN 160 | 28 | 18 | 35 | 20,0 | 41 |
| XV NW 25 HL 16 27 | D | PN 160 | 28 | 18 | 37 | 22,0 | 41 |
| XV NW 25 HL 20 | D | PN 160 | 28 | 22 | 37 | 22,0 | 41 |
| XV NW 25 HL | D | PN 160 | 28 | 28 | 36 | 21,0 | 41 |
| XV NW 32 HL 20 | D | PN 160 | 35 | 22 | 39 | 21,0 | 46 |
| XV NW 32 HL 25 | D | PN 160 | 35 | 28 | 39 | 21,0 | 46 |
| XV NW 32 HL | D | PN 160 | 35 | 35 | 41 | 20,0 | 46 |
| XV NW 40 HL 25 | D | PN 160 | 42 | 28 | 41 | 22,5 | 55 |
| XV NW 40 HL 32 | D | PN 160 | 42 | 35 | 43 | 21,5 | 55 |
| XV NW 40 HL | D | PN 160 | 42 | 42 | 66 | 21,0 | 55 |
| XV NW 16 HL 13 HS | D / S | PN 315 | 18 | 16 | 33 | 17,0 | 27 |
| XV NW 03 HS | S | PN 630 | 6 | 6 | 30 | 16,0 | 14 |
| XV NW 04 HS 03 | S | PN 630 | 8 | 6 | 32 | 18,0 | 17 |
| XV NW 04 HS | S | PN 630 | 8 | 8 | 32 | 18,0 | 17 |
| XV NW 06 HS 03 | S | PN 630 | 10 | 6 | 32 | 17,5 | 19 |
| XV NW 06 HS 04 | S | PN 630 | 10 | 8 | 32 | 17,5 | 19 |
| XV NW 06 HS | S | PN 630 | 10 | 10 | 32 | 17,0 | 19 |
| XV NW 08 HS 03 | S | PN 630 | 12 | 6 | 34 | 19,5 | 22 |
| XV NW 08 HS 04 | S | PN 630 | 12 | 8 | 34 | 19,5 | 22 |
| XV NW 08 HS 06 | S | PN 630 | 12 | 10 | 34 | 19,0 | 22 |
| XV NW 08 HS | S | PN 630 | 12 | 12 | 34 | 19,0 | 22 |
| XV NW 10 HS 03 | S | PN 630 | 14 | 6 | 36 | 21,0 | 24 |
| XV NW 10 HS 04 | S | PN 630 | 14 | 8 | 36 | 21,0 | 24 |
| XV NW 10 HS 06 | S | PN 630 | 14 | 10 | 36 | 20,5 | 24 |
| XV NW 10 HS 08 | S | PN 630 | 14 | 12 | 36 | 20,5 | 24 |
| XV NW 10 HS | S | PN 630 | 14 | 14 | 38 | 22,0 | 24 |
| XV NW 13 HS 03 | S | PN 400 | 16 | 6 | 36 | 20,5 | 27 |
| XV NW 13 HS 04 | S | PN 400 | 16 | 8 | 36 | 20,5 | 27 |
| XV NW 13 HS 06 | S | PN 400 | 16 | 10 | 36 | 20,0 | 27 |
| XV NW 13 HS 08 | S | PN 400 | 16 | 12 | 36 | 20,0 | 27 |
| XV NW 13 HS 10 | S | PN 400 | 16 | 14 | 38 | 21,5 | 27 |
| XV NW 13 HS | S | PN 400 | 16 | 16 | 38 | 21,0 | 27 |
| XV NW 16 HS 06 | S | PN 400 | 20 | 10 | 40 | 22,0 | 32 |
| XV NW 16 HS 08 | S | PN 400 | 20 | 12 | 40 | 22,0 | 32 |
| XV NW 16 HS 10 | S | PN 400 | 20 | 14 | 42 | 23,5 | 32 |
| XV NW 16 HS 13 | S | PN 400 | 20 | 16 | 42 | 23,0 | 32 |
| XV NW 16 HS | S | PN 400 | 20 | 20 | 44 | 23,0 | 32 |
| XV NW 20 HS 13 | S | PN 400 | 25 | 16 | 46 | 25,5 | 41 |
| XV NW 20 HS 16 | S | PN 400 | 25 | 20 | 48 | 25,5 | 41 |
| XV NW 20 HS | S | PN 400 | 25 | 25 | 50 | 26,0 | 41 |
| XV NW 25 HS 13 | S | PN 400 | 30 | 16 | 48 | 26,0 | 46 |
| XV NW 25 HS 16 | S | PN 400 | 30 | 20 | 50 | 26,0 | 46 |
| XV NW 25 HS 20 | S | PN 400 | 30 | 25 | 52 | 26,5 | 46 |
| XV NW 25 HS | S | PN 400 | 30 | 30 | 54 | 27,0 | 46 |
| XV NW 32 HS 13 | S | PN 315 | 38 | 16 | 53 | 28,5 | 55 |
| XV NW 32 HS 20 | S | PN 315 | 38 | 25 | 57 | 29,0 | 55 |
| XV NW 32 HS 25 | S | PN 315 | 38 | 30 | 59 | 29,5 | 55 |
| XV NW 32 HS | S | PN 315 | 38 | 38 | 61 | 29,0 | 55 |
| XV NW 13 HS 13 HL | S / D | PN 400 | 16 | 15 | 36 | 20,5 | 27 |
| XV NW 16 HS 13 HL | S / D | PN 400 | 20 | 15 | 40 | 22,5 | 32 |
| XV NW 16 HS 16 HL | S / D | PN 400 | 20 | 18 | 40 | 22,0 | 32 |
| XV NW 20 HS 20 HL | S / D | PN 400 | 25 | 22 | 46 | 26,5 | 41 |

Konštrukčný rad: LL = Veľmi ľahká L = Ľahká S = Ťažká – PN = Menovitý tlak PB = Max. prevádzkový tlak – Ø d1 = Vonkajší priemer rúry – Ø d2 = Vonkajší priemer rúry

Varianty produktu

| | |
|--------------------|---------------------------|
| XV VA | Nákrutka, Ušľachtilá ocel |
| V-LL / V-HL / V-HS | Nákrutka, Oceľ |