

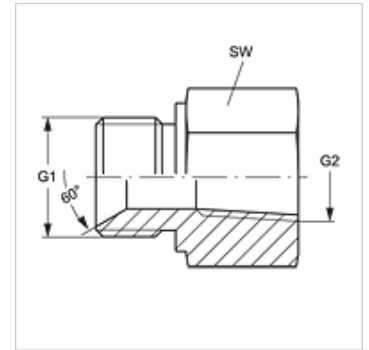
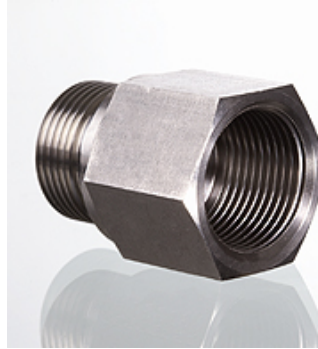
G HB IN VA

Hrdlo k privareniu

HANSA FLEX

Vlastnosti

| | |
|-----------------|-----------------------------|
| Prípojka 1 | Vonkajší závit BSP, valcový |
| Tvar tesnenia 1 | Vnútorňý kužel 60° |
| Prípojka 2 | Vnútorňý závit NPT |
| Tvar tesnenia 2 | tesniaci závit |
| Konštrukcia | Hrdlo k privareniu |
| Vyhotovenie | priame |
| Materiál | Ušľachtaná oceľ |



Výrobok

| Označenie | G1 | G2 | SW (mm) |
|------------------|--------------|------------------|------------|
| G HB 02 IN VA | G 1/8" -28 | 1/8" -27 NPT | 14 |
| G HB 02 IN 04 VA | G 1/8" -28 | 1/4" -18 NPT | 19 |
| G HB 04 IN 02 VA | G 1/4" -19 | 1/8" -27 NPT | 19 |
| G HB 04 IN VA | G 1/4" -19 | 1/4" -18 NPT | 19 |
| G HB 04 IN 06 VA | G 1/4" -19 | 3/8" -18 NPT | 24 |
| G HB 04 IN 08 VA | G 1/4" -19 | 1/2" -14 NPT | 27 |
| G HB 06 IN 04 VA | G 3/8" -19 | 1/4" -18 NPT | 22 |
| G HB 06 IN VA | G 3/8" -19 | 3/8" -18 NPT | 24 |
| G HB 06 IN 08 VA | G 3/8" -19 | 1/2" -14 NPT | 27 |
| G HB 08 IN 04 VA | G 1/2" -14 | 1/4" -18 NPT | 27 |
| G HB 08 IN 06 VA | G 1/2" -14 | 3/8" -18 NPT | 27 |
| G HB 08 IN VA | G 1/2" -14 | 1/2" -14 NPT | 27 |
| G HB 08 IN 12 VA | G 1/2" -14 | 3/4" -14 NPT | 36 |
| G HB 12 IN 06 VA | G 3/4" -14 | 3/8" -18 NPT | 32 |
| G HB 12 IN 08 VA | G 3/4" -14 | 1/2" -14 NPT | 32 |
| G HB 12 IN VA | G 3/4" -14 | 3/4" -14 NPT | 36 |
| G HB 12 IN 16 VA | G 3/4" -14 | 1" -11,5 NPT | 36 |
| G HB 16 IN 08 VA | G 1" -11 | 1/2" -14 NPT | 41 |
| G HB 16 IN 12 VA | G 1" -11 | 3/4" -14 NPT | 41 |
| G HB 16 IN VA | G 1" -11 | 1" -11,5 NPT | 41 |
| G HB 20 IN 16 VA | G 1,1/4" -11 | 1" -11,5 NPT | 50 |
| G HB 20 IN VA | G 1,1/4" -11 | 1,1/4" -11,5 NPT | 50 |
| G HB 24 IN VA | G 1,1/2" -11 | 1,1/2" -11,5 NPT | 55 |
| G HB 32 IN VA | G 2" -11 | 2" -11,5 NPT | 60 |

SW = Šírka kľúča

Varianty produktu

G HB IN Hrdlo k privareniu, Oceľ