

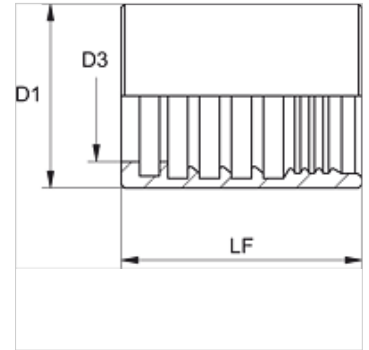
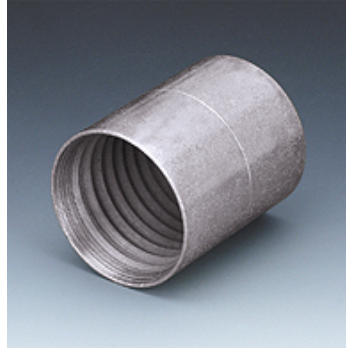
# PHY 100

Objímka k nalisovaniu, NY 100

**HANSA FLEX**

## Vlastnosti

Druh uchytienia	Objímka bez strhnutia
Materiál	Oceľ
Povrchová ochrana	galvanický povlak



## Výrobok

Označenie	DN*	Rozmer	Clo	D1 (mm)	D3 (mm)	LF (mm)
PHY 104	5	3	3/16"	16,0	9,5	28,0
PHY 106	6	4	1/4"	19,0	11,6	29,5
PHY 108	8	5	5/16"	22,0	12,7	29,5
PHY 110	10	6	3/8"	23,0	14,3	32,8
PHY 113	12	8	1/2"	26,0	18,6	34,0
PHY 116	16	10	5/8"	30,0	22,0	36,5
PHY 120	19	12	3/4"	33,0	25,7	41,0
PHY 125	25	16	1"	40,0	31,8	41,0

DN = menovitý priemer, menovitá šírka