

PHY 700 VA

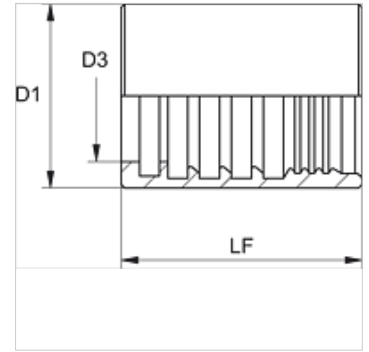
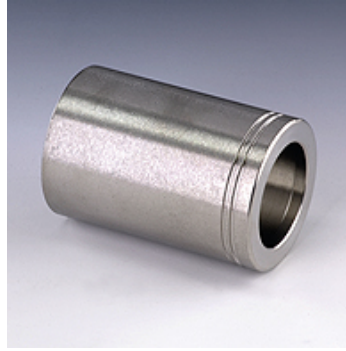
Objímka k nalisovaniu, NY 700

HANSA FLEX

Vlastnosti

Druh uchytenia Objímka bez strhnutia

Materiál Ušľachtilá oceľ



Výrobok

Označenie	DN*	Rozmer	Clo	D1 (mm)	D3 (mm)	LF (mm)
PHY 706 VA	6	4	1/4"	18,0	10,5	34,5
PHY 708 VA	8	5	5/16"	19,0	12,0	34,5
PHY 710 VA	10	6	3/8"	22,0	14,0	35,0
PHY 713 VA	12	8	1/2"	25,0	17,2	37,0
PHY 716 VA	16	10	5/8"	30,0	20,5	40,0
PHY 720 VA	19	12	3/4"	33,0	24,3	45,0
PHY 725 VA	25	16	1"	40,0	30,5	50,0

DN = menovitý priemer, menovitá šírka

Varianty produktu

PHY 700 N Objímka k nalisovaniu, NY 700, Oceľ