

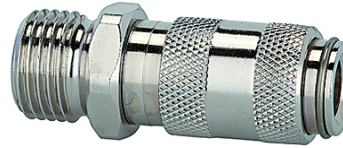
K-SVKM NW 2,7 AG MS NI

Quick disconnect couplings DN 2.7, nickel-plated brass, male

HANSA FLEX

Vlastnosti

Prevádzkový tlak	0 - 35 bar, maximum static working pressure (non-pulsating)
Prietok vzduch	165 l/min (at 6 bar and $\Delta p = 0.5$ bar)
Teplota média	-20 °C to +100 °C
kryt, puzdro, teleso ventila	Nickel-plated brass
pružina, rozperný krúžok, gule	stain less steel
Tesniaci materiál	NBR



Poznámka

Ďalšie údaje na vyžiadanie.

Popis

One-hand quick disconnect coupling, one side sealing, extremely compact, with a large bore and a small pressure drop. Ideal for: Medical & Dental equipment, instrumentation and control, laboratory equipment, chemical applications, small tools, analysis, miniature pneumatics, engineering.

Výrobok

Označenie	Prípojka	Dĺžka (mm)	SW (mm)
K- 07 35 06 18	M 5 male	26,0	9
K- 07 35 06 19	G 1/8 male	28,0	11