

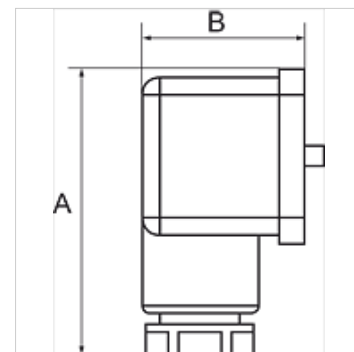
K-DRS ELK GERAETESTECKER VAKUUM

Pressure switches, connection with plug connector, type A acc. to DIN 43650

HANSA FLEX

Vlastnosti

Oblasť použitia	Pneumatic applications
Frekvencia spínania	200/min.
Spínacie napätie	max. 250 V AC / 28 V DC
Rozsah nastavenia	-0.85 / +1 bar
Krytie	IP 65 (DIN 43650), IP 67 (M 12 x 1)
Rozsah teplôt	-10 °C to +80 °C
nastavovacia hlavica	Aluminium, powder-coated
Kryt	Special die-cast material
membrána, tesnenie	Perbunan



Poznámka

Ďalšie údaje na vyžiadanie.

Popis

For converting pneumatic to electrical signals. Designed for use in rough vacuum applications (technical vacuum). Universal switch type, suitable as NC, NO or changeover contact. These devices are free from paint-wetting impairment substances (PWIS).

Výrobok

Označenie	Prípojka	A: (mm)	B (mm)
K- 07 30 28 51	Príruba	48,0	28,0
K- 07 30 28 53	G 1/4	48,0	28,0