

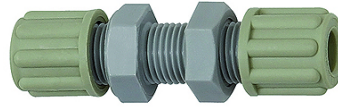
K-SCHOTTVERBINDUNGEN

Bulkhead couplings

HANSA FLEX

Vlastnosti

Prevádzkový tlak	Dependent on operating temperature; Max. 10 bar (at 20 °C); Max. 1 bar (at 60 °C)
teleso nákrutky	Polyamide (PA)
zvierací krúžok	Polypropylene (PP)
matica	Polypropylene (PP)



Poznámka

Ďalšie údaje na vyžiadanie.

Popis

Manufactured from high impact-resistant, UV-stabilised engineering plastic, extremely resistant to weathering. Good chemical resistance to benzine, diesel oil, fuel oil and alkalis.
Not suitable for use with acids.

Výrobok

Označenie	Závit	pre hadicu	L1 (mm)	SW
K- 07 40 32 74	M 10 x 1	4 mm / 6 mm	53,0	14 mm
K- 07 40 32 75	M 14 x 1,5	6 mm / 8 mm	64,0	19 mm
K- 07 40 32 76	M 16 x 1,5	8 mm / 10 mm	73,0	22 mm
K- 07 40 32 77	M 18 x 1,5	9 mm / 12 mm	84,0	24 mm