

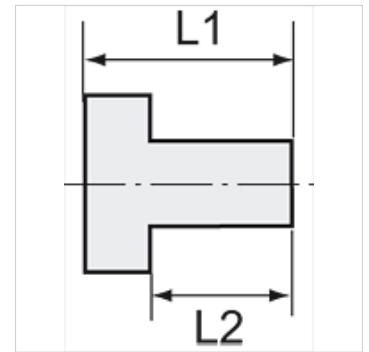
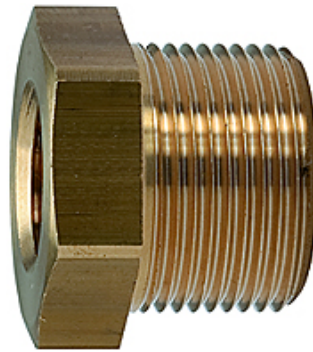
# K-RD NIPPEL KURZ 1

Reducing nipples, short type

**HANSA FLEX**

## Vlastnosti

|                |                                 |
|----------------|---------------------------------|
| Pracovný tlak  | 10 bar                          |
| Teplota média  | max. +90 °C                     |
| Teplota okolia | Max. +90 °C                     |
| Materiál       | Brass with a bare metal surface |



## Poznámka

The dimensions of the standard screw fittings may change slightly during the life of the catalogue as a result of optimisation processes.

Ďalšie údaje na vyžiadanie.

## Výrobok

| Označenie      | Vonkajší závit | Vnútorňý závit | L1<br>(mm) | L2<br>(mm) | SW    |
|----------------|----------------|----------------|------------|------------|-------|
| K- 07 35 11 21 | M 14 x 1.5     | M 10 x 1       | 11,0       | 7,0        | 17 mm |
| K- 07 35 11 22 | M 24 x 1.5     | M 16 x 1.5     | 24,0       | 16,0       | 27 mm |
| K- 07 40 00 48 | G 1/8          | M 5            | 11,0       | 7,0        | 14 mm |
| K- 07 40 00 49 | G 1/4          | M 5            | 14,0       | 10,0       | 17 mm |
| K- 07 40 00 50 | G 1/4          | G 1/8          | 13,0       | 8,0        | 17 mm |
| K- 07 40 00 53 | G 3/8          | G 1/8          | 13,0       | 9,5        | 19 mm |
| K- 07 40 40 83 | G 3/8          | G 1/4          | 13,0       | 9,5        | 19 mm |
| K- 07 40 00 55 | G 1/2          | G 1/8          | 18,0       | 12,0       | 24 mm |
| K- 07 40 00 54 | G 1/2          | G 1/4          | 15,5       | 11,5       | 22 mm |
| K- 07 40 00 51 | G 1/2          | G 3/8          | 15,5       | 11,5       | 22 mm |
| K- 07 40 44 30 | G 3/4          | G 1/4          | 18,0       | 12,0       | 27 mm |
| K- 07 40 00 56 | G 3/4          | G 3/8          | 18,0       | 12,0       | 32 mm |
| K- 07 40 00 52 | G 3/4          | G 1/2          | 21,0       | 14,0       | 32 mm |
| K- 07 40 00 57 | G 1            | G 1/2          | 24,0       | 16,0       | 36 mm |
| K- 07 40 40 84 | G 1            | G 3/4          | 18,0       | 12,0       | 36 mm |
| K- 07 40 44 31 | G 1 1/4        | G 3/4          | 23,0       | 16,0       | 42 mm |
| K- 07 40 00 58 | G 1 1/4        | G 1            | 24,0       | 16,0       | 42 mm |
| K- 07 40 44 32 | G 1 1/2        | G 3/4          | 24,0       | 16,0       | 50 mm |
| K- 07 40 00 59 | G 1 1/2        | G 1            | 24,0       | 16,0       | 48 mm |
| K- 07 40 00 60 | G 1 1/2        | G 1 1/4        | 21,0       | 15,0       | 50 mm |
| K- 07 40 00 61 | G 2            | G 1            | 28,0       | 18,0       | 62 mm |
| K- 07 40 00 62 | G 2            | G 1 1/4        | 26,5       | 18,0       | 62 mm |
| K- 07 40 00 63 | G 2            | G 1 1/2        | 30,0       | 20,0       | 65 mm |