

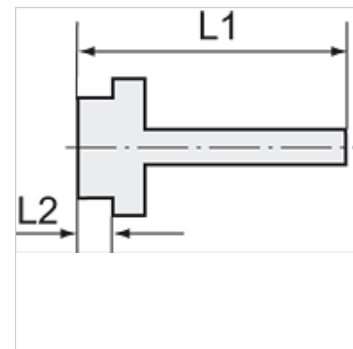
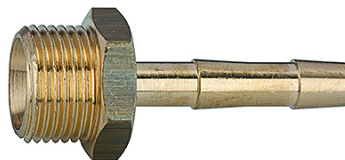
K-TR AG 1

Male hose fittings with parallel male thread

HANSA FLEX

Vlastnosti

| | |
|----------------|---------------------------------|
| Pracovný tlak | 10 bar |
| Teplota média | max. +90 °C |
| Teplota okolia | Max. +90 °C |
| Materiál | Brass with a bare metal surface |



Poznámka

The dimensions of the standard screw fittings may change slightly during the life of the catalogue as a result of optimisation processes.
Ďalšie údaje na vyžiadanie.

Dodatočné informácie

Further types and dimensions on request.

Výrobok

| Označenie | Závit | pre hadicu | L1 (mm) | L2 (mm) | SW |
|----------------|------------|------------|------------|------------|-------|
| K- 07 40 13 84 | M 5 | LW 4 mm | 15,5 | 5,0 | 7 mm |
| K- 07 40 13 86 | G 1/8 | LW 6 mm | 41,5 | 9,0 | 14 mm |
| K- 07 40 49 70 | G 1/8 | LW 8 mm | 36,0 | 7,0 | 14 mm |
| K- 07 40 49 16 | G 1/4 | LW 8 mm | 39,0 | 9,0 | 17 mm |
| K- 07 40 49 20 | G 1/4 | LW 10 mm | 39,0 | 9,0 | 17 mm |
| K- 07 40 13 72 | G 3/8 | LW 4 mm | 48,5 | 10,0 | 19 mm |
| K- 07 40 13 73 | G 3/8 | LW 6 mm | 48,5 | 10,0 | 19 mm |
| K- 07 40 49 26 | G 3/8 | LW 8 mm | 39,0 | 9,0 | 19 mm |
| K- 07 40 14 02 | G 3/8 left | LW 6 mm | 48,5 | 10,0 | 19 mm |
| K- 07 40 49 29 | G 3/8 | LW 10 mm | 39,0 | 9,0 | 19 mm |
| K- 07 40 14 03 | G 3/8 left | LW 9 mm | 48,5 | 10,0 | 19 mm |
| K- 07 40 49 36 | G 1/2 | LW 8 mm | 42,0 | 11,0 | 24 mm |
| K- 07 40 49 39 | G 1/2 | LW 10 mm | 42,0 | 11,0 | 24 mm |
| K- 07 40 49 54 | G 3/4 | LW 25 mm | 54,0 | 12,0 | 32 mm |
| K- 07 40 49 56 | G 1 | LW 19 mm | 55,0 | 13,0 | 38 mm |
| K- 07 40 13 83 | G 1 | LW 32 mm | 57,0 | 12,0 | 38 mm |
| K- 07 40 49 61 | G 1 1/4 | LW 32 mm | 61,0 | 14,0 | 50 mm |
| K- 07 40 49 62 | G 1 1/4 | LW 38 mm | 68,5 | 15,0 | 42 mm |
| K- 07 40 49 63 | G 1 1/2 | LW 32 mm | 67,0 | 15,0 | 55 mm |
| K- 07 40 49 64 | G 1 1/2 | LW 38 mm | 71,0 | 15,0 | 55 mm |
| K- 07 40 49 65 | G 1 1/2 | LW 50 mm | 71,0 | 15,0 | 55 mm |
| K- 07 40 49 66 | G 2 | LW 50 mm | 88,0 | 20,0 | 70 mm |