

# K-VHR VALUE LINE MS NI

Screw plugs

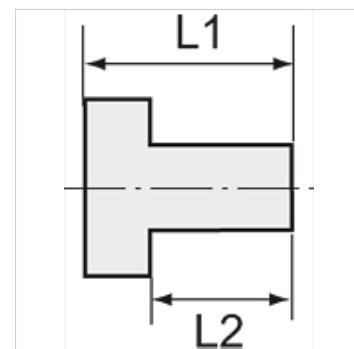
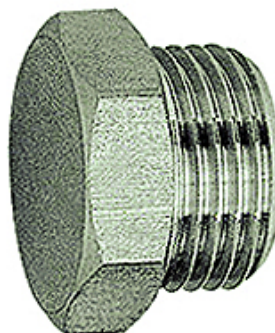
**HANSA FLEX**

## Vlastnosti

max. prevádzkový tlak 60 bar

max. prevádzková teplota 150 °C

Materiál Mosadzný poniklovaný



## Poznámka

The dimensions of the standard screw fittings may change slightly during the life of the catalogue as a result of optimisation processes.

Ďalšie údaje na vyžiadanie.

## Popis

For air, water, steam, oil, etc.

## Výrobok

Označenie	Závit	L1 (mm)	L2 (mm)	SW
K- 07 40 40 03	M 5	7,0	4,0	8 mm
K- 07 40 40 04	G 1/8	10,0	6,0	14 mm
K- 07 40 40 05	G 1/4	12,5	8,0	17 mm
K- 07 40 40 06	G 3/8	13,5	9,0	19 mm
K- 07 40 40 07	G 1/2	15,5	10,0	24 mm
K- 07 40 40 08	G 3/4	16,5	11,0	30 mm