

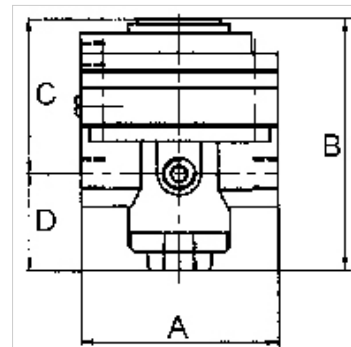
# K-PRAEZI DRUCKREGL PNEU FERN

Precision pressure regulators

**HANSA FLEX**

## Vlastnosti

Vstupný tlak	Max. 16 bar
Teplota média	max. 60 °C
Teplota okolia	Max. 60 °C
Médiá	Micro-filtered, unoiled compressed air (0.01 µm)
Prípojka pre manometer	G 1/4
Prietok	3000 l/min
Pripojenie odvodušnenia	G 3/8 (for mounting a silencer)
Riadiaci tlak	Max. 10 bar
Pripojenie riadiaceho vzduchu	G 1/8
Tesniaci materiál	NBR
Kryt	Die-cast zinc, painted black
Spotreba vlastného vzduchu	6 l/min at Pin = 16 bar



## Poznámka

Attention! A set of wearing parts cannot be supplied! These pressure regulators may only be opened in the factory! The given flow rates are based on the following parameters: 3000 l/min: P1: 5 bar, P2: 3 bar,  $\Delta p \leq 0,1$  bar.

Ďalšie údaje na vyžiadanie.

## Popis

With high flow rate and large secondary relief port. Pneumatically controlled diaphragm pressure regulators with large secondary relief port for applications requiring an extremely accurate working pressure, especially at high flow rates. We recommend our »multifix« series of pilot controllers.

## Dodatočné informácie

1500 l/min: P1: 10 bar, P2: 7 bar,  $\Delta p \leq 0,1$  bar.

## Výrobok

Označenie	Závit	Rozsah regulácie	A: (mm)	B	C (mm)	D: (mm)
K- 07 25 09 35	G 1/2	0.05 - 7 bar (max. 10 bar)	82,0	108,0 mm	64,5	43,5

## Náhradné diely

K-HALTERBAUSATZ STANDARD	Holder
K-KM MS	Hexagonal lock nuts, brass
K-SCHALLDAEPFER VYON	Vyon silencers
K-FILTERELEMENT	Filter element
K-XV AGM 2	Double nipples, parallel male thread