

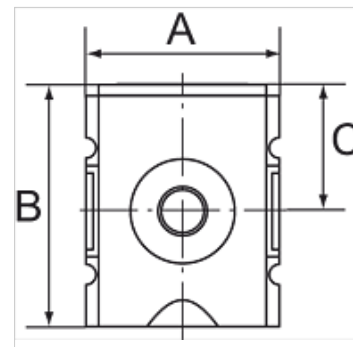
K-VERTEILER HANSA

Manifolds

HANSA FLEX

Vlastnosti

| | |
|-------------------|----------------------------|
| Vstupný tlak | 0 - 16 bar |
| Rozsah teplôt | -10 °C to +50 °C |
| Médiá | Tlakový vzduch |
| Pripojovací závit | Material: Die-cast zinc |
| Kryt | Material: Grivory® (PA 66) |



Poznámka

Ďalšie údaje na vyžiadanie.

Výrobok

| Označenie | Outlets | Závit | Prietok (L/min) | A: (mm) | B | C (mm) |
|----------------|---------------------------------|-------|-----------------|---------|----------|--------|
| K- 07 25 11 17 | 3 x G 1/4 | G 1/4 | 2700 | 52,0 | 65,5 mm | 34,5 |
| K- 07 25 11 18 | 3 x G 1/4 | G 3/8 | 3600 | 52,0 | 65,5 mm | 34,5 |
| K- 07 25 11 19 | 2 x G 3/8, 1 x G 1/4, 1 x G 1/2 | G 3/8 | 7250 | 63,0 | 80,5 mm | 43,0 |
| K- 07 25 11 20 | 2 x G 3/8, 1 x G 1/4, 1 x G 1/2 | G 1/2 | 7250 | 63,0 | 80,5 mm | 43,0 |
| K- 07 25 11 21 | 2 x G 3/4 | G 3/4 | 18000 | 85,0 | 109,5 mm | 58,5 |
| K- 07 25 11 22 | 2 x G 3/4 | G 1 | 18000 | 85,0 | 109,5 mm | 58,5 |

Náhradné diely

| | |
|------------------------------|-------------------------------|
| K-HALTERBAUSATZ HANSA | Holder HANSA |
| K-ERSATZBEHAELTER HANSA POLY | Spare tank HANSA polycarbonat |
| K-GERAETESTECKER | Coupling socket |