

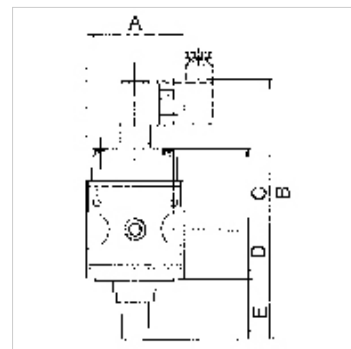
K-SCHALTVENTILE 3/2 MULTIFIX

On-off valves (3/2-way valves)

HANSA FLEX

Vlastnosti

Vstupný tlak	Min. 2 bar, max. 10 bar
Teplota média	max. 60 °C
Teplota okolia	Max. 60 °C
Elektrické pripojenie	Device plug PG 9, type B, EN 175301-803
Krytie	IP 65 (P 54) acc. to DIN 40050
Trvanie zapnutia relatívne	100 %
Pripojenie odvodu vzduchu	Silencer G 1/4
Tesniaci materiál	NBR
Kryt	Die-cast zinc
Meranie prietoku množstva	At P1 = 6 bar and pressure drop $\Delta p = 1$ bar



Poznámka

Ďalšie údaje na vyžiadanie.

Popis

Pneumatic systems or parts of systems can be switched on and off by means of an electrical signal. When they are switched off, the system is relieved at the same time.

Pokyny pre objednanie

On-off valves are also available in a pneumatically operated version. Please ask for more information.

Výrobok

Označenie	Závit	Prietok (L/min)	Magnetická cievka	A: (mm)	B	C (mm)	D: (mm)	E (mm)	Veľkosť
K- 07 25 11 65	G 1/4	900	24 V AC, 50 Hz	47,8	138,7 mm	43,7	26,0	17,5	1
K- 07 25 11 66	G 1/4	900	230 V AC, 50 Hz	47,8	138,7 mm	43,7	26,0	17,5	1
K- 07 25 11 67	G 1/4	900	110 V AC, 50 Hz	47,8	138,7 mm	43,7	26,0	17,5	1
K- 07 25 11 68	G 1/4	900	24 V DC	47,8	138,7 mm	43,7	26,0	17,5	1
K- 07 25 11 69	G 1/2	4000	24 V AC, 50 Hz / 12 V DC	68,8	185,0 mm	56,2	33,5	44,1	2
K- 07 25 11 70	G 1/2	4000	230 V AC, 50 Hz	68,8	185,0 mm	56,2	33,5	44,1	2
K- 07 25 11 71	G 1/2	4000	110 V AC, 50 Hz	68,8	185,0 mm	56,2	33,5	44,1	2
K- 07 25 11 72	G 1/2	4000	24 V DC	68,8	185,0 mm	56,2	33,5	44,1	2

Príslušenstvo

K-SCHALLDAE SINTERBR GE MS1 Silencers, sintered bronze, with brass hexagon nut and brass thread

Náhradné diely

K-KOPPELPAKET MEHR	Coupling packet
K-KOPPELPAKET SCHMA	Coupling packet
K-GERAETESTECKER	Coupling socket
K-HALTERBAUSATZ MULTIFIX	Holder
K-MAGNETSPULE MULTIFIX	Solenoid
K-WV 3/2 VORSTEU HAND MULTIFIX	3/2-way valve