

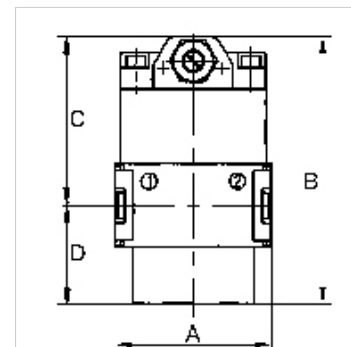
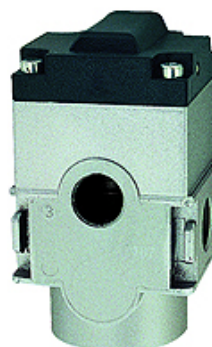
K-ANFAV MULTIFIX MINI

Start-up valves

HANSA FLEX

Vlastnosti

Vstupný tlak	Min. 2.5 bar, max. 16 bar
Teplota média	max. 60 °C
Teplota okolia	Max. 60 °C
Prietok	1600 l/min
Tesniaci materiál	NBR
Kryt	Die-cast zinc
Meranie prietochného množstva	At P1 = 6 bar and pressure drop $\Delta p = 1$ bar



Poznámka

If several devices in the »multifix-mini« Series are assembled together, the maximum working pressure is 12 bar.

Ďalšie údaje na vyžiadanie.

Popis

Seat valves operated by secondary pressure for controlled pressurisation of pneumatic systems. The full cross-section of the regulator is opened at 50% of the input pressure. With adjustable restrictor!

Výrobok

Označenie	Závit	A: (mm)	B	C (mm)	D: (mm)
K- 07 25 11 53	G 1/4	45,0	77,5 mm	48,5	29,0

Príslušenstvo

K-HALTERBAUSATZ Holder

Náhradné diely

K-KOPPELPAKET MEHR Coupling packet