

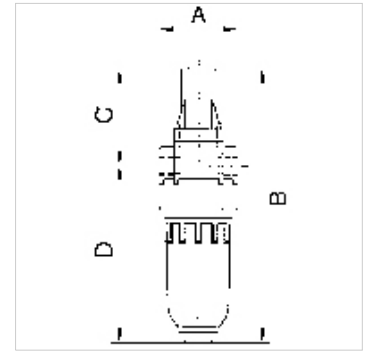
K-NEBELOE METALLBEHAE T STANDARD-M'

Oil-mist lubricators with metal bowl and metal sight dome

HANSA FLEX

Vlastnosti

Vstupný tlak	Max. 16 bar (polycarbonate bowl), Max. 25 bar (metal bowl)
Teplota média	max. 60 °C
Teplota okolia	Max. 60 °C
Prietok	650 l/min
Tesniaci materiál	NBR
Kryt	Die-cast zinc, painted silver
Vložka kvapkadla	PA (polycarbonate bowl), Zinc-glass-NBR (metal bowl)
Druh oleja	CL 32 acc. to DIN 51517 - ISO VG 32
Meranie prietochného množstva	At P1 = 6 bar and pressure drop $\Delta p = 1$ bar
Ďalšie údaje	User manual on request



Popis

Proportional lubricators in compact design, oil can be filled under pressure.

Výrobok

Označenie	Závit	A: (mm)	B	C (mm)	D: (mm)	DN
K- 07 25 08 84	G 1/8	40,0	141,0 mm	49,0	92,0	5
K- 07 25 08 86	G 1/4	40,0	141,0 mm	49,0	92,0	5

Náhradné diely

K-ERSATZBEHAELTER MULTI MINI	Spare tank »multifix-mini« & »standard-mini«
K-TROPFAUFSATZ POLYCARBO	Drip attachment polycarbonate
K-TROPFAUFSATZ METALL	Drip attachment metal
K-LOESBARE DOPPELNIPPEL MS	Double nipples
K-XV AGM MS NI	Double nipples, parallel male thread, nickel-plated brass