

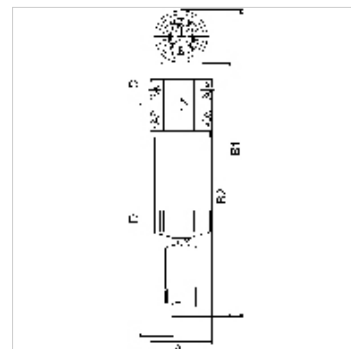
K-FI MIKRO M DIFFERENZ MANO

Micro-filters with differential pressure gauge

HANSA FLEX

Vlastnosti

| | |
|--|--|
| Vstupný tlak | Min. 4 bar, Max. 16 bar |
| Rozsah zobrazenia manometer rozdielového tlaku | 0 - 2 bar |
| kryt, nádržka filtra | Aluminium |
| Teplota okolia | +5 °C to +60 °C |
| Jemnosť filtra | 0,01 µm |
| účinnosť | 99.9999 % |
| vložka filtra | Borosilicate (with glass-fibre and foam plastic) |
| Meranie prietochového množstva | At P1 = 6 bar and pressure drop $\Delta p = 1.5\%$ |



Poznámka

Ďalšie údaje na vyžiadanie.

Popis

Suitable for all applications where the standard centrifugal separators do not afford the desired efficiency. The pre-filters and micro-filters are equipped with an automatic drain valve. All devices can be supplied with or without a differential pressure gauge. The differential pressure gauge indicates the degree of contamination of the filter element as a function of the pressure drop.

Výrobok

| Označenie | Závit | Prietok (L/min) | A: (mm) | B1 (mm) | B2 (mm) | C (mm) | D: (mm) |
|----------------|---------|-----------------|---------|---------|---------|--------|---------|
| K- 07 25 13 02 | G 1/4 | 1300 | 82,5 | 407,0 | 335,0 | 57,0 | 353,0 |
| K- 07 25 13 03 | G 3/8 | 1300 | 82,5 | 407,0 | 335,0 | 57,0 | 353,0 |
| K- 07 25 13 04 | G 1/2 | 1300 | 82,5 | 407,0 | 335,0 | 57,0 | 353,0 |
| K- 07 25 13 05 | G 3/4 | 2000 | 82,5 | 477,0 | 405,0 | 57,0 | 493,0 |
| K- 07 25 13 06 | G 1 | 4080 | 118,0 | 492,0 | 420,0 | 72,0 | 458,0 |
| K- 07 25 13 07 | G 1 1/4 | 4580 | 118,0 | 592,0 | 520,0 | 72,0 | 658,0 |
| K- 07 25 13 08 | G 1 1/2 | 6500 | 118,0 | 692,0 | 620,0 | 72,0 | 858,0 |
| K- 07 25 13 09 | G 2 | 9000 | 118,0 | 882,0 | 810,0 | 72,0 | 1238,0 |

Náhradné diely

| | |
|----------------------------|-----------------------------|
| K-FILTERELEMENT SONDER | Filter element |
| K-VERBINDUNGSELEMENTE SOND | Connecting sets |
| K-HALTERBAUSATZ | Holder |
| K-DIFFERENZDRUCKMANOMETER | Differential pressure gauge |
| K-AUTOMAT ABLASSVENTIL | Automatic drain valve |