

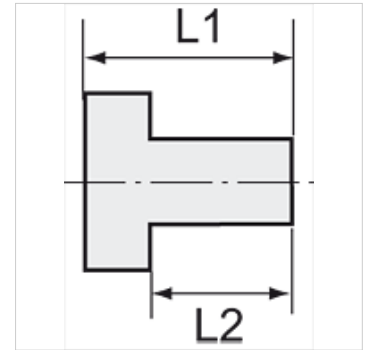
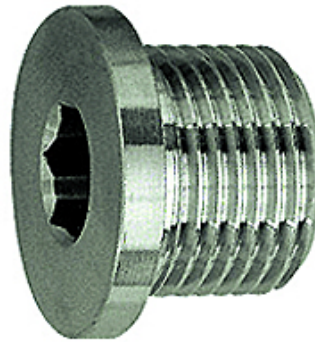
K-VHR IS BUND ES

Hexagon socket screw plugs with collar

HANSA FLEX

Vlastnosti

Pracovný tlak	Max. 20 bar
Konštrukcia	Uzatváracia skrutka, s vnútorným šesťhranom
Materiál	Ušľachtilá oceľ 1.4571



Poznámka

The dimensions of the standard screw fittings may change slightly during the life of the catalogue as a result of optimisation processes.

Ďalšie údaje na vyžiadanie.

Dodatočné informácie

Further types and dimensions on request.

Výrobok

Označenie	Závit	L1 (mm)	L2 (mm)	SW
K- 07 40 39 65	G 1/8	11,0	8,0	5 mm
K- 07 40 39 66	G 1/4	13,0	10,0	6 mm
K- 07 40 39 67	G 3/8	15,0	12,0	8 mm
K- 07 40 39 68	G 1/2	18,0	14,0	10 mm
K- 07 40 45 22	G 3/4	20,0	16,0	12 mm
K- 07 40 45 25	G 1	21,0	16,0	17 mm