

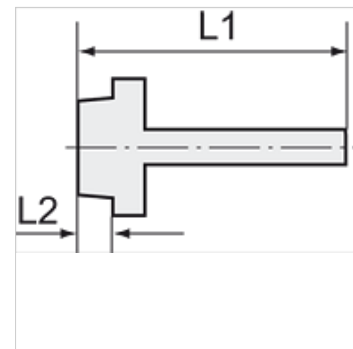
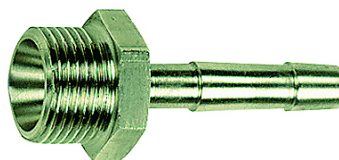
K-TR AG MS NI

Male hose fittings, parallel male thread - nickel plated brass

HANSA FLEX

Vlastnosti

Prevádzková teplota	Max. 150 °C
Tlak	Max. 60 bar
Materiál	Mosadzný poniklovaný



Poznámka

The dimensions of the standard screw fittings may change slightly during the life of the catalogue as a result of optimisation processes.
Ďalšie údaje na vyžiadanie.

Popis

Suitable for air, water, oil, steam, etc.

Dodatočné informácie

Further types and dimensions on request.

Výrobok

Označenie	Závit	pre hadicu	L1 (mm)	L2 (mm)	SW
K- 07 40 49 72	G 1/8	LW 6 mm	36,0	7,0	14 mm
K- 07 40 49 73	G 1/8	LW 8 mm	36,0	7,0	14 mm
K- 07 40 49 74	G 1/8	LW 9 mm	36,0	7,0	14 mm
K- 07 40 49 15	G 1/4	LW 4 mm	36,0	9,0	17 mm
K- 07 40 49 18	G 1/4	LW 6 mm	39,0	9,0	17 mm
K- 07 40 49 19	G 1/4	LW 8 mm	39,0	9,0	17 mm
K- 07 40 49 23	G 1/4	LW 9 mm	39,0	9,0	17 mm
K- 07 40 49 24	G 1/4	LW 10 mm	39,0	9,0	17 mm
K- 07 40 49 25	G 1/4	LW 13 mm	42,0	9,0	17 mm
K- 07 40 49 28	G 3/8	LW 8 mm	39,0	9,0	19 mm
K- 07 40 49 32	G 3/8	LW 9 mm	39,0	9,0	19 mm
K- 07 40 49 33	G 3/8	LW 10 mm	39,0	9,0	19 mm
K- 07 40 49 35	G 3/8	LW 13 mm	42,0	9,0	19 mm
K- 07 40 49 38	G 1/2	LW 8 mm	42,0	11,0	24 mm
K- 07 40 49 41	G 1/2	LW 9 mm	42,0	11,0	24 mm
K- 07 40 49 42	G 1/2	LW 10 mm	42,0	11,0	24 mm
K- 07 40 49 47	G 1/2	LW 13 mm	45,0	11,0	24 mm
K- 07 40 49 48	G 1/2	LW 16 mm	53,0	11,0	24 mm
K- 07 40 49 49	G 1/2	LW 19 mm	53,0	11,0	24 mm
K- 07 40 49 50	G 3/4	LW 13 mm	51,0	12,0	32 mm
K- 07 40 49 51	G 3/4	LW 16 mm	51,0	12,0	32 mm
K- 07 40 49 53	G 3/4	LW 19 mm	54,0	12,0	32 mm
K- 07 40 49 55	G 3/4	LW 25 mm	54,0	12,0	32 mm
K- 07 40 49 60	G 1	LW 25 mm	49,0	15,0	34 mm
K- 07 40 49 68	G 1	LW 32 mm	55,0	13,0	38 mm