

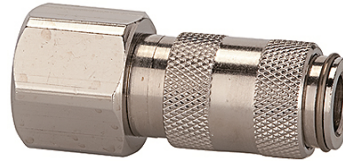
# K-SVKM NW 2,7 IG VA

Quick disconnect couplings DN 2.7, stainless steel 1.4404, female

**HANSA FLEX**

## Vlastnosti

Prevádzkový tlak	0 - 35 bar, maximum static working pressure (non-pulsating)
Prietok vzduch	165 l/min (at 6 bar and $\Delta p = 0.5$ bar)
Teplota média	-15 °C to +200 °C
kryt, puzdro, teleso ventila	Stainless steel 1.4404
pružina, rozperný krúžok, gule	Stainless steel 1.4404
Tesniaci materiál	FKM



## Poznámka

Ďalšie údaje na vyžiadanie.

## Popis

One-hand quick disconnect couplings, one side sealing, extremely compact with a large bore and only a small pressure drop. Ideal for: Medical equipment, chemical and pharmaceutical industry, laboratories, plant construction and butchers.

## Výrobok

Označenie	Prípojka	Dĺžka (mm)	SW (mm)
K- 07 35 12 47	M 5 female	25,0	9
K- 07 35 12 48	G 1/8 female	28,0	12