

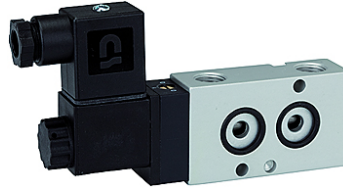
# K-WV 3/2 LB NAMUR GETAUSCHT

3/2-way spool valves with NAMUR style interface, NC, ports 1 and 3 or 2 and 3 swapped

**HANSA FLEX**

## Vlastnosti

Médiá	Air, neutral gases, filtered
Pracovný tlak	1.5 to 10 bar
Prevádzková teplota	-20 °C to +70 °C
Elektrické pripojenie	Plug connector PG 9
Je zahrnuté v rozsahu dodávky	Plug connector PG 9, 1 coding pin, 2 O-rings, 2 fixing screws
Príkon	3 W=/5 VA~
Kryt	Aluminium, anodised
posúvač	Stainless steel
Tesniaci materiál	NBR



## Poznámka

Ďalšie údaje na vyžiadanie.

## Popis

3/2 and 5/2-way spool valves, monostable, with air purging function and pneumatic spring return. With latching manual operator and optional outgoing air restriction.

Two or three-piece service units with excellent flow rates in modern design. <br>Lockable diaphragm pressure regulator with secondary ventilation, oil can be filled without interrupting operation.<br>

## Výrobok

Označenie	Napätie	Prípojka	DN	Prietok (L/min)
K- 07 15 00 05	230 V, 50 Hz	G 1/4	7	1250
K- 07 15 00 06	24 V DC	G 1/4	7	1250