

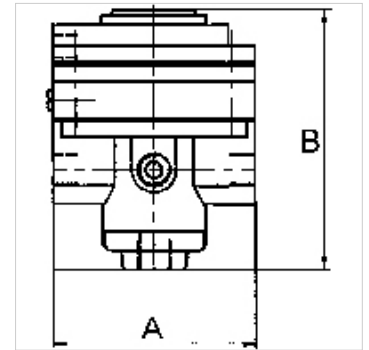
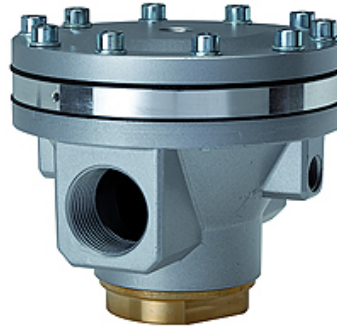
# K-DRG PNEU FERNGESTEUERT

Pressure regulators pneumatic remote control

**HANSA FLEX**

## Vlastnosti

Vstupný tlak	Max. 25 bar
Výstupný tlak	Acc. to pilot regulator
Teplota média	max. 80 °C
Prípoj pre pneumatické diaľkové ovládanie	G 1/4
Prevádzková teplota	Max. 80 °C
Tesniaci materiál	NBR
Kryt	Die-cast zinc (G1/2). Aluminium (G3/4 to G2)
Meranie prietochového množstva	At P1 = 8 bar, P2 = 6 bar and pressure drop $\Delta p = 1$ bar



## Poznámka

Ďalšie údaje na vyžiadanie.

## Popis

Diaphragm pressure regulators, self-relieving, with pneumatic remote control. The full functionality is assured in combination with a pilot regulator. We recommend using one of our precision or standard pressure regulators with a G 1/4 port as the pilot regulator. To design a closed control loop similar to the sketch below (K-07250511), please use our precision pilot regulator (feedback).

## Výrobok

Označenie	Závit	Prietok (L/min)	A: (mm)	B
K- 07 25 05 05	G 1/2	5200	82,0	68,0 mm
K- 07 25 05 06	G 3/4	14000	117,0	108,0 mm
K- 07 25 05 07	G 1	14000	117,0	108,0 mm
K- 07 25 05 08	G 1 1/4	35000	125,0	122,0 mm
K- 07 25 05 09	G 1 1/2	35000	125,0	122,0 mm
K- 07 25 05 10	G 2	50000	160,0	197,0 mm

## Príslušenstvo

K-HALTERBAUSATZ STANDARD Holder