

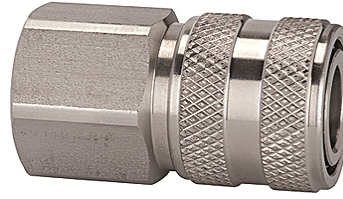
K-SVKM NW 7,2 IG VA

Quick disconnect couplings DN 7.2, stainless steel, female

HANSA FLEX

Vlastnosti

Prevádzkový tlak	1 - 35 bar and rough vacuum
Prietok vzduch	1.000 l/min (at 6 bar and $\Delta p = 0.5$ bar)
Teplota média	-25 °C to +200 °C
kryt, puzdro, teleso ventila	Stainless steel 1.4305
pružina, rozperný krúžok	Stainless steel 1.4310
blokovacie kolfky	Stainless steel 1.4401
Tesniaci materiál	FKM



Poznámka

Ďalšie údaje na vyžiadanie.

Popis

Classic standard coupling type, one side sealing, made of stainless steel. The closed sleeve protects the coupling from dirt. We recommend the use of stainless steel plugs and stems!

Výrobok

Označenie	Prípojka	Dĺžka (mm)	SW (mm)
K- 07 35 07 62	G 1/4 female	43,0	22
K- 07 35 07 63	G 3/8 female	43,0	22
K- 07 35 07 64	G 1/2 female	46,0	24

Prídavné elementy

K-NIPPEL KUPPL NW7 AG VA 2	Plugs for couplings DN 7.2 - DN 7.8, stainless steel 1.4305, male
K-NIPPEL KUPPL NW7 IG VA 1	Plugs for couplings DN 7.2 - DN 7.8, stainless steel 1.4305, female
K-TUE 7,2 7,8 VA 2	Stems for couplings DN 7.2 - DN 7.8, stainless steel 1.4305