

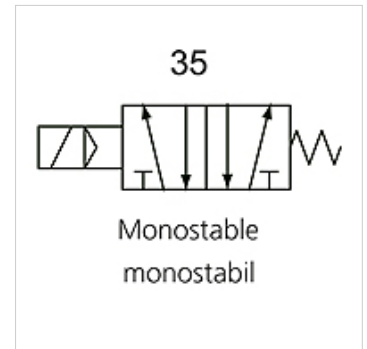
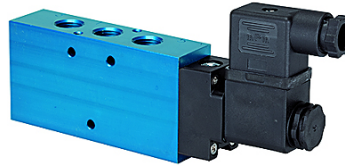
K-WV 5/2 EINS ELEKTRO

5/2-way spool valves, single solenoid

HANSA FLEX

Vlastnosti

Funkcia	5/2-way
Prevádzkový tlak	2.5 - 10 bar; Max. vacuum 10 bar (external pilot air)
min. pracovný tlak	2,5 bar
Rozsah teplôt	-10 °C to +60 °C
Prietok 6bar a 10bar	1500 NI/min (G 1/4), 4600 NI/min (G 1/2)
Elektrické pripojenie	Coupler plug PG 9 - form B
Krytie	IP 65 (DIN 46244)
Kryt	Anodised aluminium, blue
piestový posúvač	Stainless steel
Tesniaci materiál	NBR



Poznámka

Ďalšie údaje na vyžiadanie.

Popis

This valve design, featuring the Tapered Tee Seal®, offers the ability to run without lubrication and supports almost any compressed air quality. The valves are largely resistant to dirt and can thus also be used under extreme conditions without any problems. Leakage is now a thing of the past and the spool no longer sticks, even after long idle periods.

Výrobok

Označenie	Prípojka	Napätie	DN	Schéma zapojenia číslo	Riadenie
K- 07 15 02 21	G 1/4	24 V DC	8	35	
K- 07 15 02 22	G 1/2"	24 V DC	15	35	
K- 07 15 02 23	G 1/4	230 V AC, 50 Hz	8	35	
K- 07 15 02 24	G 1/2"	230 V AC, 50 Hz	15	35	