

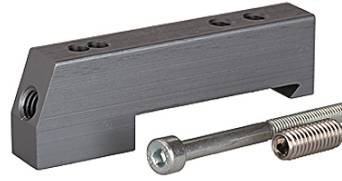
K-ADA HUTPROFIL

Adapter for DIN rail

HANSA FLEX

Vlastnosti

Médiá	Filtered, unlubricated or lubricated compressed air. If lubrication is used, it must be continuous.
Pracovný tlak	Max. vacuum 10 bar (external pilots), 3 to 7 bar (internal pilots as standard)
Riadiaci tlak	3 - 7 bar
Rozsah teplôt	-10 °C to +60 °C
Prietok	200 NI/min (Ø 4), 500 NI/min (Ø 6), 800 NI/min (Ø 8)
Počet ovládaní	Max. 16 (e.g. 16 spring return valves)
Aretácia	Latching (bistable), Monostable (non-latching) version also available on request
Príkonnosť	0.6 W per pilot
Krytie	IP 65



Poznámka

Ďalšie údaje na vyžiadanie.

Popis

These compact valve terminals, with a maximum flow rate of 800 NI/min, can be individually adapted to the specific conditions of each application thanks to the wide range of functions and various input and intermediate plates. Since each valve terminal is a customer-specific combination of a series of individual elements, the catalogue only lists the available input, intermediate and end plates as well as the different valve discs and the 25-pin multi-pole connectors.

Dodatočné informácie

Important: The scope of supply does not include a connector. Please order separately.

Výrobok

Označenie	Definícia
K- 07 15 22 43	Adapter for DIN rail