

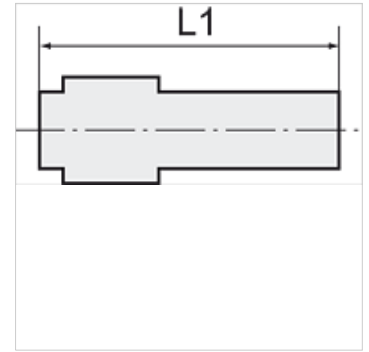
K-RD STUECKE POM

Reducers

HANSA FLEX

Vlastnosti

Pracovný tlak	0 - 16 bar (4 - 8 mm); 0 - 10 bar (10 - 28 mm)
Prevádzková teplota	-20 °C to +70 °C in air; +1 °C to +70 °C in water
Materiál	Acetalpolymerisat (POM)
Tesniaci materiál	NBR



Poznámka

Ďalšie údaje na vyžiadanie.

Popis

Lightweight, push-in fittings distinguished by high strength, toughness, resistance to abrasion and impact resistance - ideal for a wide range of applications. Plastic and metal tubes are connected together quickly and easily. Suitable for compressed air or liquids, with good resistance to a large number of chemicals.

Výrobok

Označenie	pre vonkajší Ø hadice	L1 (mm)	Hrdlo (mm)
K- 07 40 28 91	8 mm	46,7	12
K- 07 40 28 92	10 mm	50,9	12
K- 07 40 28 93	10 mm	61,2	15
K- 07 40 28 94	12 mm	61,2	15
K- 07 40 28 95	15 mm	71,7	18
K- 07 40 28 96	15 mm	72,7	22
K- 07 40 28 97	18 mm	71,8	22
K- 07 40 28 98	15 mm	81,4	28
K- 07 40 28 99	22 mm	82,6	28