

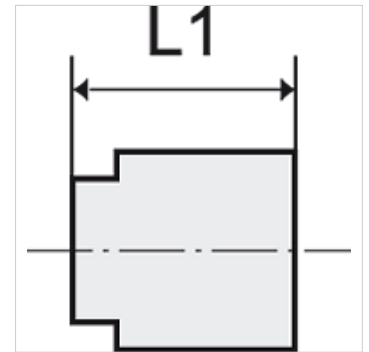
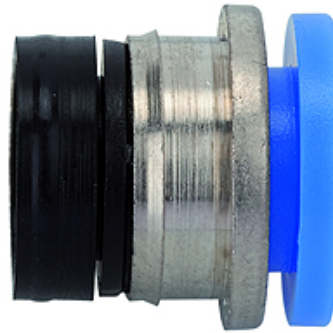
K-EINPRESSPATRONE

Press-in sleeves - can only be pressed into plastic

HANSA FLEX

Vlastnosti

| | |
|-------------------|--|
| Pracovný tlak | Max. 15 bar, coarse vacuum |
| Oblasť použitia | Air, vacuum |
| odporované hadice | PU or PA (nylon) |
| Médiá | Compressed air and all gases or liquids that are compatible with the materials |
| Rozsah teplôt | -20 °C to +80 °C |
| Tesniaca plocha | Parallel version: O-ring in housing, Conical version: thread coating |
| Materiál | Plastic, Nickel plated brass |
| Prítláčny krúžok | Plastic |



Poznámka

Only in plastic press-fitted
Ďalšie údaje na vyžiadanie.

Popis

Push-in fittings series manufactured in plastic and nickel-plated brass. All parts are suitable for use with hoses, tubes or pipes made of plastic and copper.

Výrobok

| Označenie | pre vonkajší Ø hadice | L1 (mm) |
|----------------|-----------------------|------------|
| K- 07 40 09 95 | 4 mm | 11,3 |
| K- 07 40 09 96 | 6 mm | 11,9 |
| K- 07 40 09 97 | 8 mm | 13,7 |
| K- 07 40 09 98 | 10 mm | 15,2 |
| K- 07 40 09 99 | 12 mm | 17,6 |