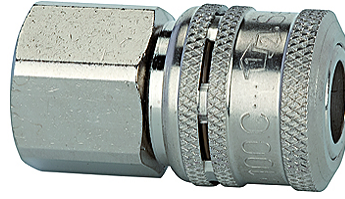


# K-LKM S NW7,2 IG

Safety couplings DN 7.2, female

## Vlastnosti

Prevádzkový tlak	0 - 35 bar, maximum static working pressure (non-pulsating)
Prietok vzduch	1.100 l/min (at $\Delta p = 0.5$ bar)
Teplota média	-30 °C to +100 °C
kryt, puzdro, teleso ventilu	Nickel-plated brass
pružina, gule	Stainless-steel
Tesniaci materiál	NBR



## Poznámka

Ďalšie údaje na vyžiadanie.

## Popis

One-hand safety coupling with double locking mechanism. Connection: Similar to standard couplings, simply by pressing the plug into the coupling. Disconnection: The first locking mechanism is accessible when the sleeve is pushed back. The coupling valve closes. Air can then be relieved from the plug side (hose). The second locking mechanism is released by actuating the unlocking sleeve again. The coupling can now be disconnected.

## Výrobok

Označenie	Prípojka	Dĺžka (mm)	SW (mm)
K- 07 35 02 95	G 1/4 female	46,0	22
K- 07 35 02 96	G 3/8 female	46,0	22
K- 07 35 02 97	G 1/2 female	49,0	24

## Prídavné elementy

K-NIPPEL KUPPL NW7 AG VZ	Plugs for couplings DN 7.2 - DN 7.8, hardened, galvanised steel, male
K-NIPPEL KUPPL NW7 IG VZ 1	Plugs for couplings DN 7.2 - DN 7.8, hardened and galvanised steel, female
K-TUE 7,2 7,8 ST VZ 1	Stems for couplings DN 7.2 - DN 7.8, hardened, galvanised steel,