

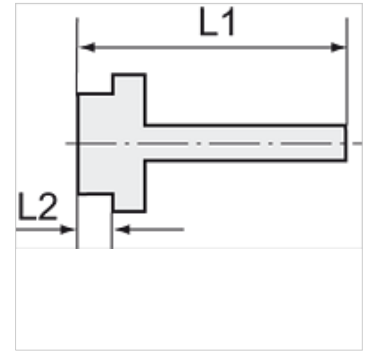
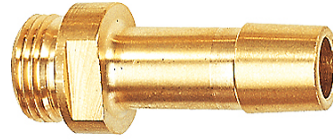
K-EST 12 MS

Male stems for coupling NW12 MS

HANSA FLEX

Vlastnosti

Pracovný tlak	10 bar
Teplota média	max. +90 °C
Teplota okolia	Max. +90 °C
Materiál	Brass with a bare metal surface



Poznámka

The dimensions of the standard screw fittings may change slightly during the life of the catalogue as a result of optimisation processes.
Ďalšie údaje na vyžiadanie.

Dodatočné informácie

Further types and dimensions on request.

Výrobok

Označenie	Závit	pre hadicu	L1 (mm)	L2 (mm)	SW
K- 07 35 00 88	G 1/2	LW 16 mm	58,0	10,0	20 mm