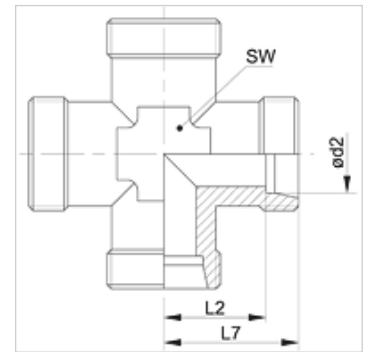


## Lastnosti

|                      |  |
|----------------------|--|
| Priključek 1 - 4     | metrični zunanji navoj, cilindrični                  |
| Oblika tesnila 1 - 4 | 24° notranji konus                                   |
| Način izdelave       | vijačni priključek                                   |
| Oblika izdelave      | izvedba K  |
| Standard             | DIN 2353<br>ISO 8434-1                               |
| Obseg dobave         | nastavek (brez prekrivne matice in rezalnega obroča) |
| Material:            | jeklo  |
| Zaščita površine     | galvanično prevlečeno                                |



## Navodilo

Za navodila za montažo, vgradnjo, obremenitev s tlakom in dovoljene temperature delovanja si, prosimo, oglejte tehnične podatke za navojne cevne priključke.

## Artikel

| Opis        | Serijska | Obratovalni tlak bar | Ø d2<br>(mm) | L2<br>(mm) | L7<br>(mm) | SW<br>(mm) |
|-------------|----------|----------------------|--------------|------------|------------|------------|
| XK 04 LL    | LL       | PN 100               | 4            | 11,0       | 15,0       | 9          |
| XK 05 LL    | LL       | PN 100               | 5            | 9,5        | 15,0       | 9          |
| XK 06 LL    | LL       | PN 100               | 6            | 9,5        | 15,0       | 9          |
| XK 08 LL    | LL       | PN 100               | 8            | 11,5       | 17,0       | 12         |
| XK NW 04 HL | L        | PN 315               | 6            | 12,0       | 19,0       | 12         |
| XK NW 06 HL | L        | PN 315               | 8            | 14,0       | 21,0       | 12         |
| XK NW 08 HL | L        | PN 315               | 10           | 15,0       | 22,0       | 14         |
| XK NW 10 HL | L        | PN 315               | 12           | 17,0       | 24,0       | 17         |
| XK NW 13 HL | L        | PN 315               | 15           | 21,0       | 28,0       | 19         |
| XK NW 16 HL | L        | PN 315               | 18           | 23,5       | 31,0       | 24         |
| XK NW 20 HL | L        | PN 160               | 22           | 27,5       | 35,0       | 27         |
| XK NW 25 HL | L        | PN 160               | 28           | 30,5       | 38,0       | 36         |
| XK NW 32 HL | L        | PN 160               | 35           | 34,5       | 45,0       | 41         |
| XK NW 40 HL | L        | PN 160               | 42           | 40,0       | 51,0       | 50         |
| XK NW 03 HS | S        | PN 630               | 6            | 16,0       | 23,0       | 12         |
| XK NW 04 HS | S        | PN 630               | 8            | 17,0       | 24,0       | 14         |
| XK NW 06 HS | S        | PN 630               | 10           | 17,5       | 25,0       | 17         |
| XK NW 08 HS | S        | PN 630               | 12           | 21,5       | 29,0       | 17         |
| XK NW 10 HS | S        | PN 630               | 14           | 22,0       | 30,0       | 19         |
| XK NW 13 HS | S        | PN 400               | 16           | 24,5       | 33,0       | 24         |
| XK NW 16 HS | S        | PN 400               | 20           | 26,5       | 37,0       | 27         |
| XK NW 20 HS | S        | PN 400               | 25           | 30,0       | 42,0       | 36         |
| XK NW 25 HS | S        | PN 400               | 30           | 35,5       | 49,0       | 41         |
| XK NW 32 HS | S        | PN 315               | 38           | 41,0       | 57,0       | 50         |

serija: LL = zelo lahko L = lahko S = težko - PN = nazivni tlak PB = maks. obratovalni tlak - Ø d2 = zunanji premer cevi

## Variante izdelka

|       |   |
|-------|---|
| XK VA | Vijačni priključek, izvedba na križ, nerjavno jeklo |
| K     | Vijačni priključek, izvedba na križ, jeklo          |